

IL1A Antibody (Center)

Affinity Purified Rabbit Polyclonal Antibody (Pab)

Catalog # AP6860c

Product Information

Application	WB, FC, IHC-P-Leica, E
Primary Accession	P01583
Reactivity	Human, Mouse
Host	Rabbit
Clonality	Polyclonal
Isotype	Rabbit IgG
Clone Names	RB21521
Calculated MW	30607
Antigen Region	177-206

Additional Information

Gene ID	3552
Other Names	Interleukin-1 alpha, IL-1 alpha, Hematopoietin-1, IL1A, IL1F1
Target/Specificity	This IL1A antibody is generated from rabbits immunized with a KLH conjugated synthetic peptide between 177-206 amino acids from the Central region of human IL1A.
Dilution	WB~~1:2000 FC~~1:25 IHC-P-Leica~~1:500 E~~Use at an assay dependent concentration.
Format	Purified polyclonal antibody supplied in PBS with 0.09% (W/V) sodium azide. This antibody is purified through a protein A column, followed by peptide affinity purification.
Storage	Maintain refrigerated at 2-8°C for up to 2 weeks. For long term storage store at -20°C in small aliquots to prevent freeze-thaw cycles.
Precautions	IL1A Antibody (Center) is for research use only and not for use in diagnostic or therapeutic procedures.

Protein Information

Name	IL1A
Synonyms	IL1F1
Function	Cytokine constitutively present intracellularly in nearly all resting non-hematopoietic cells that plays an important role in inflammation and

bridges the innate and adaptive immune systems (PubMed:[26439902](#)). After binding to its receptor IL1R1 together with its accessory protein IL1RAP, forms the high affinity interleukin-1 receptor complex (PubMed:[17507369](#), PubMed:[2950091](#)). Signaling involves the recruitment of adapter molecules such as MYD88, IRAK1 or IRAK4 (PubMed:[17507369](#)). In turn, mediates the activation of NF-kappa-B and the three MAPK pathways p38, p42/p44 and JNK pathways (PubMed:[14687581](#)). Within the cell, acts as an alarmin and cell death results in its liberation in the extracellular space after disruption of the cell membrane to induce inflammation and alert the host to injury or damage (PubMed:[15679580](#)). In addition to its role as a danger signal, which occurs when the cytokine is passively released by cell necrosis, directly senses DNA damage and acts as a signal for genotoxic stress without loss of cell integrity (PubMed:[26439902](#)).

Cellular Location

Nucleus. Cytoplasm. Secreted Note=The lack of a specific hydrophobic segment in the precursor sequence suggests that IL-1 is released by damaged cells or is secreted by a mechanism differing from that used for other secretory proteins The secretion is dependent on protein unfolding and facilitated by the cargo receptor TMED10; it results in protein translocation from the cytoplasm into the ERGIC (endoplasmic reticulum-Golgi intermediate compartment) followed by vesicle entry and secretion (PubMed:[32272059](#)) Recruited to DNA damage sites and secreted after genotoxic stress

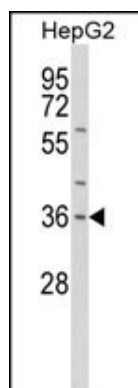
Background

IL1A is a member of the interleukin 1 cytokine family. This cytokine is a pleiotropic cytokine involved in various immune responses, inflammatory processes, and hematopoiesis. This cytokine is produced by monocytes and macrophages as a proprotein, which is proteolytically processed and released in response to cell injury, and thus induces apoptosis.

References

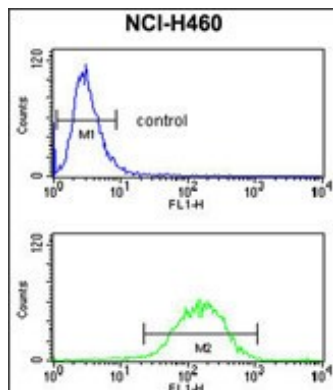
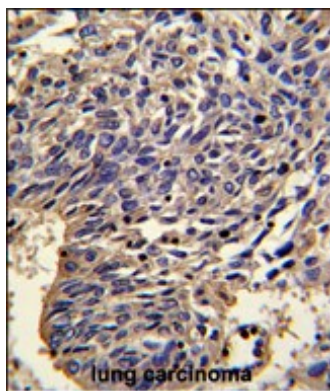
Cousin,E.,et.al., Neurobiol. Aging (2009)

Images



Western blot analysis of IL1A Antibody (Center) (Cat. #AP6860c) in HepG2 cell line lysates (35ug/lane). IL1A (arrow) was detected using the purified Pab.

Formalin-fixed and paraffin-embedded human lung carcinoma reacted with IL1A Antibody (Center), which was peroxidase-conjugated to the secondary antibody, followed by DAB staining. This data demonstrates the use of this antibody for immunohistochemistry; clinical relevance has not been evaluated.



IL1A Antibody (Center) (Cat. #AP6860c) flow cytometry analysis of NCI-H460 cells (bottom histogram) compared to a negative control cell (top histogram). FITC-conjugated goat-anti-rabbit secondary antibodies were used for the analysis.

Please note: All products are 'FOR RESEARCH USE ONLY. NOT FOR USE IN DIAGNOSTIC OR THERAPEUTIC PROCEDURES'.