

# BET3 Polyclonal Antibody

Catalog # AP68669

## Product Information

---

<b>Application</b>	WB, IHC-P, IF, ICC, E
<b>Primary Accession</b>	<a href="#">O43617</a>
<b>Reactivity</b>	Human, Mouse, Rat
<b>Host</b>	Rabbit
<b>Clonality</b>	Polyclonal
<b>Calculated MW</b>	20274

## Additional Information

---

<b>Gene ID</b>	27095
<b>Other Names</b>	TRAPPC3; BET3; CDABP0066; Trafficking protein particle complex subunit 3; BET3 homolog
<b>Dilution</b>	WB--Western Blot: 1/500 - 1/2000. Immunohistochemistry: 1/100 - 1/300. ELISA: 1/5000. Not yet tested in other applications. IHC-P--N/A IF--1:50~200 ICC--N/A E--N/A
<b>Format</b>	Liquid in PBS containing 50% glycerol, 0.5% BSA and 0.09% (W/V) sodium azide.
<b>Storage Conditions</b>	-20°C

## Protein Information

---

<b>Name</b>	TRAPPC3 {ECO:0000303   PubMed:19416478, ECO:0000312   HGNC:HGNC:19942}
<b>Function</b>	May play a role in vesicular transport from endoplasmic reticulum to Golgi.
<b>Cellular Location</b>	Golgi apparatus, cis-Golgi network. Endoplasmic reticulum

## Background

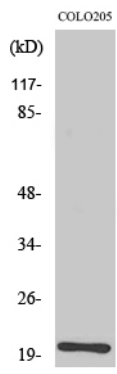
---

May play a role in vesicular transport from endoplasmic reticulum to Golgi.

## Images

---

Western Blot analysis of various cells using BET3 Polyclonal Antibody diluted at 1 : 500



Please note: All products are 'FOR RESEARCH USE ONLY. NOT FOR USE IN DIAGNOSTIC OR THERAPEUTIC PROCEDURES'.