

# B-Myb Polyclonal Antibody

Catalog # AP68693

## Product Information

---

<b>Application</b>	WB, IF
<b>Primary Accession</b>	<a href="#">P10244</a>
<b>Reactivity</b>	Human, Mouse, Rat
<b>Host</b>	Rabbit
<b>Clonality</b>	Polyclonal
<b>Calculated MW</b>	78764

## Additional Information

---

<b>Gene ID</b>	4605
<b>Other Names</b>	MYBL2; BMYB; Myb-related protein B; B-Myb; Myb-like protein 2
<b>Dilution</b>	WB~~Western Blot: 1/500 - 1/2000. Immunofluorescence: 1/200 - 1/1000. ELISA: 1/20000. Not yet tested in other applications. IF~~1:50~200
<b>Format</b>	Liquid in PBS containing 50% glycerol, 0.5% BSA and 0.09% (W/V) sodium azide.
<b>Storage Conditions</b>	-20°C

## Protein Information

---

<b>Name</b>	MYBL2
<b>Synonyms</b>	BMYB
<b>Function</b>	Transcription factor involved in the regulation of cell survival, proliferation, and differentiation. Transactivates the expression of the CLU gene.
<b>Cellular Location</b>	Nucleus.

## Background

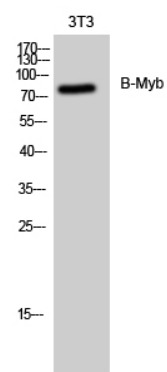
---

Transcription factor involved in the regulation of cell survival, proliferation, and differentiation. Transactivates the expression of the CLU gene.

## Images

---

Western Blot analysis of 3T3 cells using B-Myb Polyclonal



Antibody diluted at 1 : 2000 cells nucleus extracted by Minute TM Cytoplasmic and Nuclear Fractionation kit (SC-003, Inventbiotech, MN, USA).

Please note: All products are 'FOR RESEARCH USE ONLY. NOT FOR USE IN DIAGNOSTIC OR THERAPEUTIC PROCEDURES'.