

BRAF35 Polyclonal Antibody

Catalog # AP68698

Product Information

Application	WB, IHC-P, IF
Primary Accession	Q9P0W2
Reactivity	Human
Host	Rabbit
Clonality	Polyclonal
Calculated MW	35813

Additional Information

Gene ID	10362
Other Names	HMG20B; BRAF35; HMGX2; HMGXB2; SMARCE1R; SWI/SNF-related matrix-associated actin-dependent regulator of chromatin subfamily E member 1-related; SMARCE1-related protein; BRCA2-associated factor 35; HMG box-containing protein 20B; HMG domain-
Dilution	WB~~Western Blot: 1/500 - 1/2000. Immunohistochemistry: 1/100 - 1/300. Immunofluorescence: 1/200 - 1/1000. ELISA: 1/20000. Not yet tested in other applications. IHC-P~~N/A IF~~1:50~200
Format	Liquid in PBS containing 50% glycerol, 0.5% BSA and 0.09% (W/V) sodium azide.
Storage Conditions	-20°C

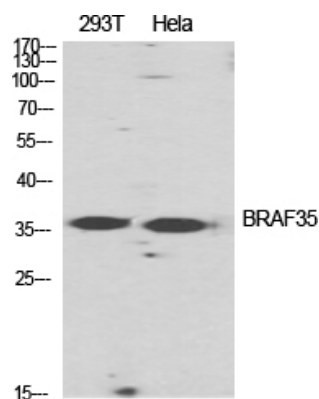
Protein Information

Name	HMG20B
Synonyms	BRAF35, HMGX2, HMGXB2, SMARCE1R
Function	Required for correct progression through G2 phase of the cell cycle and entry into mitosis. Required for RCOR1/CoREST mediated repression of neuronal specific gene promoters.
Cellular Location	Nucleus. Chromosome. Note=Localized to condensed chromosomes in mitosis in conjunction with BRCA2
Tissue Location	Ubiquitously expressed in adult tissues.

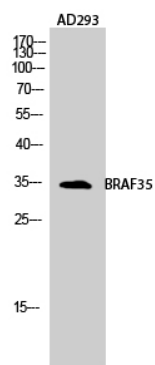
Background

Required for correct progression through G2 phase of the cell cycle and entry into mitosis. Required for RCOR1/CoREST mediated repression of neuronal specific gene promoters.

Images



Western Blot analysis of various cells using BRAF35 Polyclonal Antibody diluted at 1 : 2000 cells nucleus extracted by Minute TM Cytoplasmic and Nuclear Fractionation kit (SC-003, Inventbiotech, MN, USA).



Western Blot analysis of AD293 cells using BRAF35 Polyclonal Antibody diluted at 1 : 2000 cells nucleus extracted by Minute TM Cytoplasmic and Nuclear Fractionation kit (SC-003, Inventbiotech, MN, USA).

Please note: All products are 'FOR RESEARCH USE ONLY. NOT FOR USE IN DIAGNOSTIC OR THERAPEUTIC PROCEDURES'.