

RASIP1 Antibody (Center)

Purified Rabbit Polyclonal Antibody (Pab)

Catalog # AP6870c

Product Information

Application	WB, IHC-P, FC, E
Primary Accession	Q5U651
Reactivity	Human, Mouse
Host	Rabbit
Clonality	Polyclonal
Isotype	Rabbit IgG
Clone Names	RB19819
Calculated MW	103457
Antigen Region	651-678

Additional Information

Gene ID	54922
Other Names	Ras-interacting protein 1, Rain, RASIP1
Target/Specificity	This RASIP1 antibody is generated from rabbits immunized with a KLH conjugated synthetic peptide between 651-678 amino acids from the Central region of human RASIP1.
Dilution	WB~~1:2000 IHC-P~~1:100~500 FC~~1:10~50 E~~Use at an assay dependent concentration.
Format	Purified polyclonal antibody supplied in PBS with 0.09% (W/V) sodium azide. This antibody is purified through a protein A column, followed by peptide affinity purification.
Storage	Maintain refrigerated at 2-8°C for up to 2 weeks. For long term storage store at -20°C in small aliquots to prevent freeze-thaw cycles.
Precautions	RASIP1 Antibody (Center) is for research use only and not for use in diagnostic or therapeutic procedures.

Protein Information

Name	RASIP1
Function	Required for the proper formation of vascular structures that develop via both vasculogenesis and angiogenesis. Acts as a critical and vascular-specific regulator of GTPase signaling, cell architecture, and adhesion, which is essential for endothelial cell morphogenesis and blood vessel tubulogenesis.

Regulates the activity of Rho GTPases in part by recruiting ARHGAP29 and suppressing RhoA signaling and dampening ROCK and MYH9 activities in endothelial cells (By similarity). May act as effector for Golgi-bound HRAS and other Ras- like proteins. May promote HRAS-mediated transformation. Negative regulator of amino acid starvation-induced autophagy.

Cellular Location

Cytoplasm, perinuclear region. Golgi apparatus, Golgi stack. Note=Associated with perinuclear vesicles. Is recruited to Golgi stacks by activated HRAS

Tissue Location

Highly expressed in heart. Detected at lower levels in placenta and pancreas.

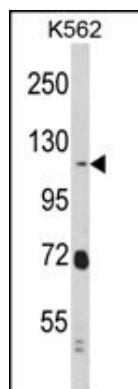
Background

RASIP1 may act as effector for Golgi-bound HRAS and other Ras-like proteins. May promote HRAS-mediated transformation.

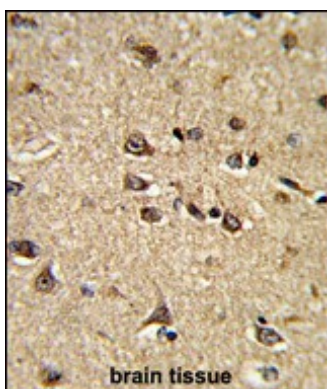
References

Mitin,N.Y.,et.al., J. Biol. Chem. 279 (21), 22353-22361 (2004)

Images



Western blot analysis of RASIP1 Antibody (Center) (Cat. #AP6870c) in K562 cell line lysates (35ug/lane). RASIP1 (arrow) was detected using the purified Pab.



Formalin-fixed and paraffin-embedded human brain tissue reacted with RASIP1 Antibody (Center), which was peroxidase-conjugated to the secondary antibody, followed by DAB staining. This data demonstrates the use of this antibody for immunohistochemistry; clinical relevance has not been evaluated.

Citations

- [Rasip1 mediates Rap1 regulation of Rho in endothelial barrier function through ArhGAP29.](#)