

Brp16 Polyclonal Antibody

Catalog # AP68713

Product Information

Application	WB, IHC-P
Primary Accession	Q9BTY7
Reactivity	Human, Mouse, Rat
Host	Rabbit
Clonality	Polyclonal
Calculated MW	42129

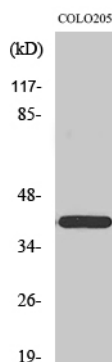
Additional Information

Gene ID	51236
Other Names	FAM203A; BRP16; C8orf30A; Protein FAM203A; Brain protein 16
Dilution	WB--Western Blot: 1/500 - 1/2000. Immunohistochemistry: 1/100 - 1/300. ELISA: 1/40000. Not yet tested in other applications. IHC-P--N/A
Format	Liquid in PBS containing 50% glycerol, 0.5% BSA and 0.09% (W/V) sodium azide.
Storage Conditions	-20°C

Protein Information

Name	HGH1
Synonyms	C8orf30A, C8orf30B, FAM203A, FAM203B

Images



Western Blot analysis of various cells using Brp16 Polyclonal Antibody

Please note: All products are 'FOR RESEARCH USE ONLY. NOT FOR USE IN DIAGNOSTIC OR THERAPEUTIC PROCEDURES'.