

PAX8 Antibody (Center)

Affinity Purified Rabbit Polyclonal Antibody (Pab)

Catalog # AP6874C

Product Information

Application	WB, IHC-P, FC, E
Primary Accession	Q06710
Other Accession	Q00288
Reactivity	Human, Rat, Mouse
Predicted	Mouse
Host	Rabbit
Clonality	Polyclonal
Isotype	Rabbit IgG
Calculated MW	48218
Antigen Region	285-313

Additional Information

Gene ID	7849
Other Names	Paired box protein Pax-8, PAX8
Target/Specificity	This PAX8 antibody is generated from rabbits immunized with a KLH conjugated synthetic peptide between 285-313 amino acids from the Central region of human PAX8.
Dilution	WB~~1:1000 IHC-P~~1:100~500 FC~~1:10~50 E~~Use at an assay dependent concentration.
Format	Purified polyclonal antibody supplied in PBS with 0.09% (W/V) sodium azide. This antibody is purified through a protein A column, followed by peptide affinity purification.
Storage	Maintain refrigerated at 2-8°C for up to 2 weeks. For long term storage store at -20°C in small aliquots to prevent freeze-thaw cycles.
Precautions	PAX8 Antibody (Center) is for research use only and not for use in diagnostic or therapeutic procedures.

Protein Information

Name	PAX8
Function	Transcription factor for the thyroid-specific expression of the genes exclusively expressed in the thyroid cell type, maintaining the functional differentiation of such cells.

Cellular Location

Nucleus.

Tissue Location

Expressed in the excretory system, thyroid gland and Wilms tumors

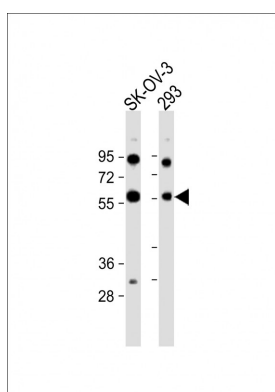
Background

PAX8 is a member of the paired box (PAX) family of transcription factors. Members of this family contain a paired box domain, an octapeptide, and a paired-type homeodomain. This nuclear protein is involved in thyroid follicular cell development and expression of thyroid-specific genes.

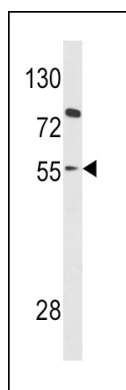
References

Ramos,H.E., et.al., Thyroid 19 (1), 61-68 (2009)

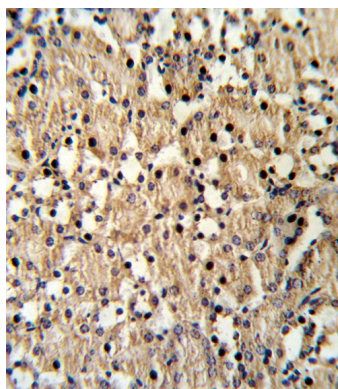
Images



All lanes : Anti-PAX8 Antibody (Center) at 1:1000 dilution
Lane 1: SK-OV-3 whole cell lysate Lane 2: 293 whole cell lysate
Lysates/proteins at 20 µg per lane. Secondary Goat Anti-Rabbit IgG, (H+L), Peroxidase conjugated at 1/10000 dilution. Predicted band size : 48 kDa
Blocking/Dilution buffer: 5% NFDM/TBST.

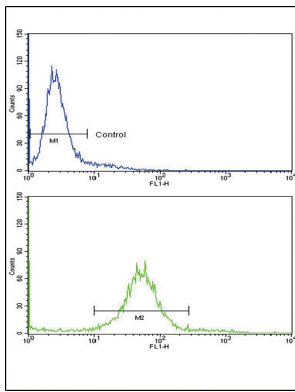


Western blot analysis of PAX8 Antibody (Center) (Cat. #AP6874c) in HL-60 cell line lysates (35ug/lane). PAX8 (arrow) was detected using the purified Pab.



(LEFT)Formalin-fixed and paraffin-embedded mouse kidney reacted with PAX8 Antibody (Center), which was peroxidase-conjugated to the secondary antibody, followed by DAB staining. This data demonstrates the use of this antibody for immunohistochemistry; clinical relevance has not been evaluated. (RIGHT)Flow cytometric analysis of 293 cells using PAX8 Antibody (Center)(bottom histogram) compared to a negative control cell (top histogram). FITC-conjugated goat-anti-rabbit secondary antibodies were used for the analysis.

(LEFT)Formalin-fixed and paraffin-embedded mouse kidney reacted with PAX8 Antibody (Center), which was



peroxidase-conjugated to the secondary antibody, followed by DAB staining. This data demonstrates the use of this antibody for immunohistochemistry; clinical relevance has not been evaluated. (RIGHT)Flow cytometric analysis of 293 cells using PAX8 Antibody (Center)(bottom histogram) compared to a negative control cell (top histogram). FITC-conjugated goat-anti-rabbit secondary antibodies were used for the analysis.

Please note: All products are 'FOR RESEARCH USE ONLY. NOT FOR USE IN DIAGNOSTIC OR THERAPEUTIC PROCEDURES'.