

# CA VB Polyclonal Antibody

Catalog # AP68760

## Product Information

---

<b>Application</b>	WB, IHC-P, IF
<b>Primary Accession</b>	<a href="#">Q9Y2D0</a>
<b>Reactivity</b>	Human, Mouse, Rat
<b>Host</b>	Rabbit
<b>Clonality</b>	Polyclonal
<b>Calculated MW</b>	36434

## Additional Information

---

<b>Gene ID</b>	11238
<b>Other Names</b>	CA5B; Carbonic anhydrase 5B; mitochondrial; Carbonate dehydratase VB; Carbonic anhydrase VB; CA-VB
<b>Dilution</b>	WB~~Western Blot: 1/500 - 1/2000. Immunohistochemistry: 1/100 - 1/300. Immunofluorescence: 1/200 - 1/1000. ELISA: 1/10000. Not yet tested in other applications. IHC-P~~N/A IF~~1:50~200
<b>Format</b>	Liquid in PBS containing 50% glycerol, 0.5% BSA and 0.09% (W/V) sodium azide.
<b>Storage Conditions</b>	-20°C

## Protein Information

---

<b>Name</b>	CA5B
<b>Function</b>	Mitochondrial carbonic anhydrase that catalyzes the reversible conversion of carbon dioxide to bicarbonate/HCO <sub>3</sub> .
<b>Cellular Location</b>	Mitochondrion.
<b>Tissue Location</b>	Strongest expression in heart, pancreas, kidney, placenta, lung, and skeletal muscle. Not expressed in liver

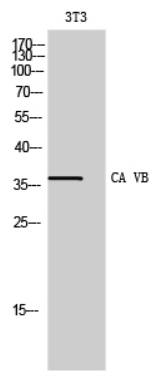
## Background

---

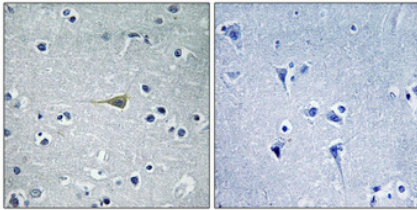
Reversible hydration of carbon dioxide.

## Images

---



Western Blot analysis of 3T3 cells using CA VB Polyclonal Antibody



Immunohistochemical analysis of paraffin-embedded Human brain. Antibody was diluted at 1:100(4°,overnight). High-pressure and temperature Tris-EDTA,pH8.0 was used for antigen retrieval. Negative contrl (right) obtaned from antibody was pre-absorbed by immunogen peptide.

Please note: All products are 'FOR RESEARCH USE ONLY. NOT FOR USE IN DIAGNOSTIC OR THERAPEUTIC PROCEDURES'.