

# Cacna2d4 Polyclonal Antibody

Catalog # AP68775

## Product Information

---

<b>Application</b>	WB, E
<b>Primary Accession</b>	<a href="#">Q7Z3S7</a>
<b>Reactivity</b>	Human, Mouse, Rat
<b>Host</b>	Rabbit
<b>Clonality</b>	Polyclonal
<b>Calculated MW</b>	127938

## Additional Information

---

<b>Gene ID</b>	93589
<b>Other Names</b>	CACNA2D4; Voltage-dependent calcium channel subunit alpha-2/delta-4; Voltage-gated calcium channel subunit alpha-2/delta-4
<b>Dilution</b>	WB~~Western Blot: 1/500 - 1/2000. ELISA: 1/20000. Not yet tested in other applications. E~~N/A
<b>Format</b>	Liquid in PBS containing 50% glycerol, 0.5% BSA and 0.09% (W/V) sodium azide.
<b>Storage Conditions</b>	-20°C

## Protein Information

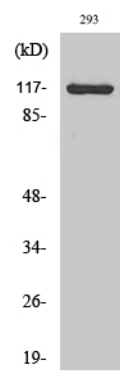
---

<b>Name</b>	CACNA2D4
<b>Function</b>	The alpha-2/delta subunit of voltage-dependent calcium channels regulates calcium current density and activation/inactivation kinetics of the calcium channel.
<b>Cellular Location</b>	Membrane; Single-pass type I membrane protein
<b>Tissue Location</b>	Predominantly expressed in certain types of endocrine cells. Present in the Paneth cells of the small intestine Also present in the erythroblasts in the fetal liver, in the cells of the zona reticularis of the adrenal gland and in the basophils of the pituitary. Present at low level in some brain regions such as the cerebellum (at protein level).

## Background

---

The alpha-2/delta subunit of voltage-dependent calcium channels regulates calcium current density and activation/inactivation kinetics of the calcium channel.



Western Blot analysis of various cells using Cacna2d4 Polyclonal Antibody

Please note: All products are 'FOR RESEARCH USE ONLY. NOT FOR USE IN DIAGNOSTIC OR THERAPEUTIC PROCEDURES'.