

Cadherin-26 Polyclonal Antibody

Catalog # AP68784

Product Information

Application	WB, IF, ICC, E
Primary Accession	Q8IXH8
Reactivity	Human, Rat, Mouse
Host	Rabbit
Clonality	Polyclonal
Calculated MW	92416

Additional Information

Gene ID	60437
Other Names	CDH26; Cadherin-like protein 26; Cadherin-like protein VR20
Dilution	WB~~Western Blot: 1/500 - 1/2000. Immunofluorescence: 1/200 - 1/1000. ELISA: 1/10000. Not yet tested in other applications. IF~~1:50~200 ICC~~N/A E~~N/A
Format	Liquid in PBS containing 50% glycerol, 0.5% BSA and 0.09% (W/V) sodium azide.
Storage Conditions	-20°C

Protein Information

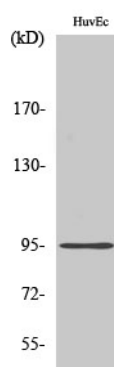
Name	CDH26
Function	Cadherins are calcium-dependent cell adhesion proteins. They preferentially interact with themselves in a homophilic manner in connecting cells; cadherins may thus contribute to the sorting of heterogeneous cell types. Ligand for integrins alpha-E/beta-7, ITGAE:ITGAB7, alpha-4/beta-7, ITGA4:ITGAB7 and alpha-4/beta-1, ITGA4:ITGAB1 through which modulates CD4(+) T cells activation (PubMed: 28051089).
Cellular Location	Cell membrane; Single-pass type I membrane protein
Tissue Location	Expressed by epithelial cells of gastrointestinal tissue.

Background

Cadherins are calcium-dependent cell adhesion proteins. They preferentially interact with themselves in a homophilic manner in connecting cells; cadherins may thus contribute to the sorting of heterogeneous cell types. Ligand for integrins alpha-E/beta-7, ITGAE:ITGAB7, alpha-4/beta-7, ITGA4:ITGAB7 and alpha-

4/beta-1, ITGA4:ITGAB1 through which modulates CD4(+) T cells activation (PubMed:[28051089](#)).

Images



Western Blot analysis of various cells using Cadherin-26 Polyclonal Antibody

Please note: All products are 'FOR RESEARCH USE ONLY. NOT FOR USE IN DIAGNOSTIC OR THERAPEUTIC PROCEDURES'.