

# CAGE-1 Polyclonal Antibody

Catalog # AP68789

## Product Information

---

Application	WB, IHC-P, IF, ICC, E
Primary Accession	<a href="#">Q8TC20</a>
Reactivity	Human, Rat, Mouse
Host	Rabbit
Clonality	Polyclonal
Calculated MW	90250

## Additional Information

---

Gene ID	285782
Other Names	CAGE1; CTAG3; Cancer-associated gene 1 protein; CAGE-1; Cancer/testis antigen 3; CT3
Dilution	WB~~Western Blot: 1/500 - 1/2000. Immunohistochemistry: 1/100 - 1/300. ELISA: 1/40000. Not yet tested in other applications. IHC-P~~N/A IF~~1:50~200 ICC~~N/A E~~N/A
Format	Liquid in PBS containing 50% glycerol, 0.5% BSA and 0.09% (W/V) sodium azide.
Storage Conditions	-20°C

## Protein Information

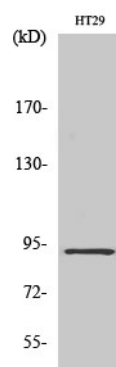
---

Name	CAGE1
Synonyms	CTAG3
Tissue Location	Testis-specific expression in normal tissues, but wide expression among cancer tissues and cell lines

## Images

---

Western Blot analysis of various cells using CAGE-1  
Polyclonal Antibody diluted at 1 : 2000



Please note: All products are 'FOR RESEARCH USE ONLY. NOT FOR USE IN DIAGNOSTIC OR THERAPEUTIC PROCEDURES'.