

# Calmodulin Polyclonal Antibody

Catalog # AP68795

## Product Information

<b>Application</b>	WB, IHC-P, IF
<b>Primary Accession</b>	<a href="#">P62158</a>
<b>Reactivity</b>	Human, Mouse, Rat
<b>Host</b>	Rabbit
<b>Clonality</b>	Polyclonal

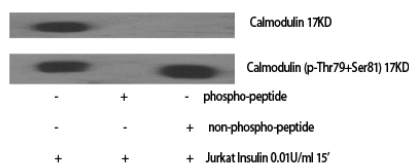
## Additional Information

<b>Other Names</b>	CALM1; CALM; CAM; CAM1; CALM2; CAM2; CAMB; CALM3; CALML2; CAM3; CAMC; CAMIII; Calmodulin; CaM
<b>Dilution</b>	WB~Western Blot: 1/500 - 1/2000. Immunohistochemistry: 1/100 - 1/300. Immunofluorescence: 1/200 - 1/1000. ELISA: 1/10000. Not yet tested in other applications. IHC-P~Western Blot: 1/500 - 1/2000. Immunohistochemistry: 1/100 - 1/300. Immunofluorescence: 1/200 - 1/1000. ELISA: 1/10000. Not yet tested in other applications. IF~1:50~200
<b>Format</b>	Liquid in PBS containing 50% glycerol, 0.5% BSA and 0.09% (W/V) sodium azide.
<b>Storage Conditions</b>	-20°C

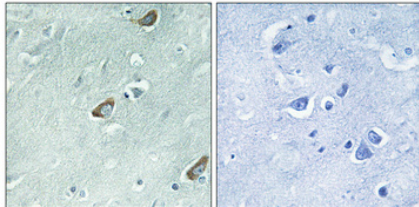
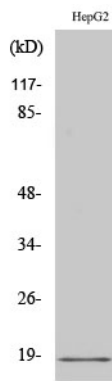
## Protein Information

## Images

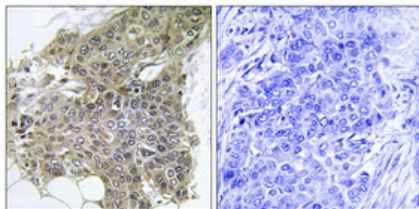
Western Blot analysis of various cells using Calmodulin Polyclonal Antibody diluted at 1 : 2000



Western Blot analysis of HuvEc cells using Calmodulin Polyclonal Antibody diluted at 1 : 2000



Immunohistochemical analysis of paraffin-embedded Human brain. Antibody was diluted at 1:100(4°,overnight). High-pressure and temperature Tris-EDTA,pH8.0 was used for antigen retrieval. Negative contrl (right) obtaned from antibody was pre-absorbed by immunogen peptide.



Immunohistochemical analysis of paraffin-embedded Human breast cancer. Antibody was diluted at 1:100(4°,overnight). High-pressure and temperature Tris-EDTA,pH8.0 was used for antigen retrieval. Negative contrl (right) obtaned from antibody was pre-absorbed by immunogen peptide.

Please note: All products are 'FOR RESEARCH USE ONLY. NOT FOR USE IN DIAGNOSTIC OR THERAPEUTIC PROCEDURES'.