

# Cardiotrophin-1 Polyclonal Antibody

Catalog # AP68821

## Product Information

---

Application	WB, IHC-P, IF, ICC, E
Primary Accession	<a href="#">Q16619</a>
Reactivity	Human, Mouse, Rat
Host	Rabbit
Clonality	Polyclonal
Calculated MW	21227

## Additional Information

---

Gene ID	1489
Other Names	CTF1; Cardiotrophin-1; CT-1
Dilution	WB~~Western Blot: 1/500 - 1/2000. Immunohistochemistry: 1/100 - 1/300. ELISA: 1/40000. Not yet tested in other applications. IHC-P~~N/A IF~~1:50~200 ICC~~N/A E~~N/A
Format	Liquid in PBS containing 50% glycerol, 0.5% BSA and 0.09% (W/V) sodium azide.
Storage Conditions	-20°C

## Protein Information

---

Name	CTF1
Function	Induces cardiac myocyte hypertrophy in vitro. Binds to and activates the ILST/gp130 receptor.
Cellular Location	Secreted.
Tissue Location	Highly expressed in heart, skeletal muscle, prostate and ovary. Lower levels in lung, kidney, pancreas, thymus, testis and small intestine. Little or no expression in brain, placenta, liver, spleen, colon or peripheral blood leukocytes

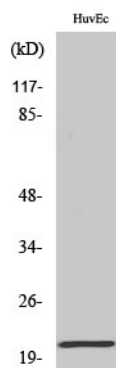
## Background

---

Induces cardiac myocyte hypertrophy in vitro. Binds to and activates the ILST/gp130 receptor.

## Images

---



Western Blot analysis of various cells using  
Cardiotrophin-1 Polyclonal Antibody

Please note: All products are 'FOR RESEARCH USE ONLY. NOT FOR USE IN DIAGNOSTIC OR THERAPEUTIC PROCEDURES'.