

# Caspase12 Polyclonal Antibody

Catalog # AP68837

## Product Information

---

<b>Application</b>	WB, IHC-P
<b>Primary Accession</b>	<a href="#">Q6UXS9</a>
<b>Reactivity</b>	Human
<b>Host</b>	Rabbit
<b>Clonality</b>	Polyclonal
<b>Calculated MW</b>	38907

## Additional Information

---

<b>Gene ID</b>	100506742
<b>Other Names</b>	CASP12; Inactive caspase-12; CASP-12
<b>Dilution</b>	WB~~Western Blot: 1/500 - 1/2000. Immunohistochemistry: 1/100 - 1/300. ELISA: 1/40000. Not yet tested in other applications. IHC-P~~N/A
<b>Format</b>	Liquid in PBS containing 50% glycerol, 0.5% BSA and 0.09% (W/V) sodium azide.
<b>Storage Conditions</b>	-20°C

## Protein Information

---

<b>Name</b>	CASP12
<b>Function</b>	May function as a negative regulator of inflammatory responses and innate immunity. May reduce cytokine release in response to bacterial lipopolysaccharide during infection. Reduces activation of NF-kappa-B in response to TNF (PubMed: <a href="#">15129283</a> ). May lack protease activity (Probable).
<b>Tissue Location</b>	Widely expressed, with highest levels in lung.

## Background

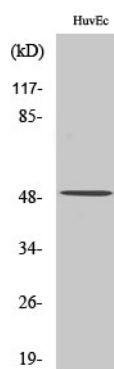
---

Has no protease activity. May reduce cytokine release in response to bacterial lipopolysaccharide during infections. Reduces activation of NF-kappa-B in response to TNF.

## Images

---

Western Blot analysis of various cells using Caspase12



Polyclonal Antibody diluted at 1 : 500

Please note: All products are 'FOR RESEARCH USE ONLY. NOT FOR USE IN DIAGNOSTIC OR THERAPEUTIC PROCEDURES'.