

RS18 Antibody (Center)

Affinity Purified Rabbit Polyclonal Antibody (Pab)

Catalog # AP6887c

Product Information

Application	IHC-P, WB, FC, IF, IHC-P-Leica, E
Primary Accession	P62269
Other Accession	P62271 , P62272 , P62270 , Q3T0R1
Reactivity	Human, Rat, Mouse
Predicted	Rat, Pig, Bovine
Host	Rabbit
Clonality	Polyclonal
Isotype	Rabbit IgG
Calculated MW	17719
Antigen Region	62-91

Additional Information

Gene ID	6222
Other Names	40S ribosomal protein S18, Ke-3, Ke3, RPS18, D6S218E
Target/Specificity	This RS18 antibody is generated from rabbits immunized with a KLH conjugated synthetic peptide between 62-91 amino acids from the Central region of human RS18.
Dilution	IHC-P~~1:100 WB~~1:1000 FC~~1:25 IF~~1:25 IHC-P-Leica~~1:500 E~~Use at an assay dependent concentration.
Format	Purified polyclonal antibody supplied in PBS with 0.09% (W/V) sodium azide. This antibody is purified through a protein A column, followed by peptide affinity purification.
Storage	Maintain refrigerated at 2-8°C for up to 2 weeks. For long term storage store at -20°C in small aliquots to prevent freeze-thaw cycles.
Precautions	RS18 Antibody (Center) is for research use only and not for use in diagnostic or therapeutic procedures.

Protein Information

Name	RPS18
Synonyms	D6S218E
Function	Component of the small ribosomal subunit. The ribosome is a large

ribonucleoprotein complex responsible for the synthesis of proteins in the cell.

Cellular Location

Cytoplasm.

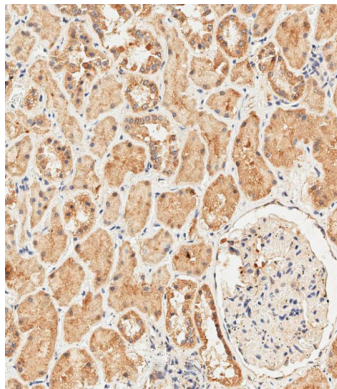
Background

Ribosomes, the organelles that catalyze protein synthesis, consist of a small 40S subunit and a large 60S subunit. Together these subunits are composed of 4 RNA species and approximately 80 structurally distinct proteins. This protein is a ribosomal protein that is a component of the 40S subunit. The protein belongs to the S13P family of ribosomal proteins. It is located in the cytoplasm.

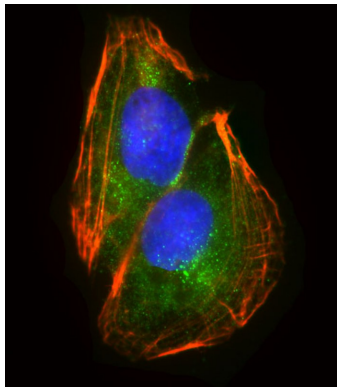
References

Yu,Y., Ji,H., et.al., Protein Sci. 14 (6), 1438-1446 (2005)

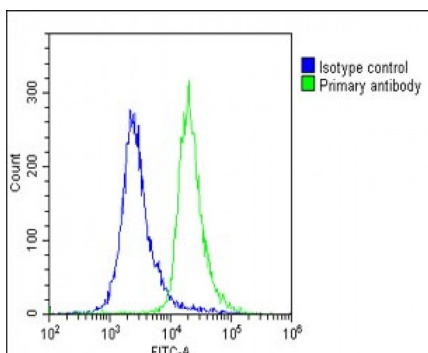
Images



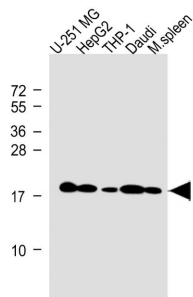
Immunohistochemical analysis of paraffin-embedded human kidney tissue using AP6887C performed on the Leica® BOND RXm. Samples were incubated with primary antibody(1/500) for 1 hours at room temperature. A undiluted biotinylated CRF Anti-Polyvalent HRP Polymer antibody was used as the secondary antibody.



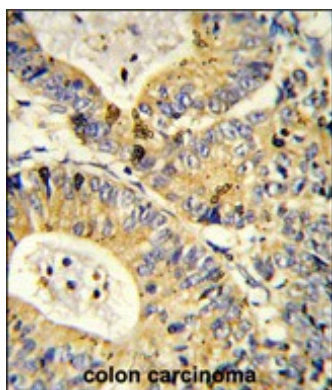
Immunofluorescent analysis of 4% paraformaldehyde-fixed, 0. 1% Triton X-100 permeabilized U-2OS cells labeling RPS18 with AP6887C at 1/25 dilution, followed by DyLight® 488-conjugated goat anti-Rabbit IgG (OH191631) secondary antibody at 1/200 dilution (green). Immunofluorescence image showing cytoplasm staining on U-2OS cell line. Cytoplasmic actin is detected with DyLight® 554 Phalloidin (1186255) at 1/500 dilution (red). The nuclear counter stain is DAPI (blue).



Overlay histogram showing U-2 OS cells stained with AP6887C(green line). The cells were fixed with 2% paraformaldehyde (10 min) and then permeabilized with 90% methanol for 10 min. The cells were then incubated in 2% bovine serum albumin to block non-specific protein-protein interactions followed by the antibody (AP6887C, 1:25 dilution) for 60 min at 37°C. The secondary antibody used was Goat-Anti-Rabbit IgG, DyLight® 488 Conjugated Highly Cross-Adsorbed(1583138) at 1/200 dilution for 40 min at 37°C. Isotype control antibody (blue line) was rabbit IgG1 (1µg/1x10⁶ cells) used under the same conditions. Acquisition of >10, 000 events was performed.



All lanes : Anti-RS18 Antibody (Center) at 1:1000 dilution
 Lane 1: U-251 MG whole cell lysate Lane 2: HepG2 whole cell lysate Lane 3: THP-1 whole cell lysate Lane 4: Daudi whole cell lysate Lane 5: Mouse spleen lysate
 Lysates/proteins at 20 µg per lane. Secondary Goat Anti-Rabbit IgG, (H+L), Peroxidase conjugated at 1/10000 dilution. Predicted band size : 18 kDa Blocking/Dilution buffer: 5% NFDM/TBST.



Formalin-fixed and paraffin-embedded human colon carcinoma reacted with RS18 Antibody (Center), which was peroxidase-conjugated to the secondary antibody, followed by DAB staining. This data demonstrates the use of this antibody for immunohistochemistry; clinical relevance has not been evaluated.

Please note: All products are 'FOR RESEARCH USE ONLY. NOT FOR USE IN DIAGNOSTIC OR THERAPEUTIC PROCEDURES'.