

CCDC102B Polyclonal Antibody

Catalog # AP68884

Product Information

Application	WB, IHC-P
Primary Accession	Q68D86
Reactivity	Human
Host	Rabbit
Clonality	Polyclonal
Calculated MW	60448

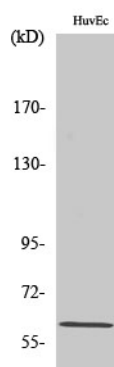
Additional Information

Gene ID	79839
Other Names	CCDC102B; C18orf14; Coiled-coil domain-containing protein 102B
Dilution	WB~~Western Blot: 1/500 - 1/2000. Immunohistochemistry: 1/100 - 1/300. ELISA: 1/40000. Not yet tested in other applications. IHC-P~~N/A
Format	Liquid in PBS containing 50% glycerol, 0.5% BSA and 0.09% (W/V) sodium azide.
Storage Conditions	-20°C

Protein Information

Name	CCDC102B
Synonyms	C18orf14
Function	During interphase, forms fibers at the proximal ends of centrioles to maintain centrosome cohesion (PubMed: 30404835). During mitosis, dissociates from the centrosome following phosphorylation to allow centrosome separation (PubMed: 30404835). Contributes to CROCC/rootletin filament formation (PubMed: 30404835).
Cellular Location	Cytoplasm, cytoskeleton, microtubule organizing center, centrosome, centriole Note=Concentrated at the proximal ends of centrioles where it forms fibers (PubMed: 30404835). Centrosomal localization becomes weak when cells enter prophase and is significantly decreased in metaphase (PubMed: 30404835).

Images



Western Blot analysis of various cells using CCDC102B
Polyclonal Antibody diluted at 1 : 1000

Please note: All products are 'FOR RESEARCH USE ONLY. NOT FOR USE IN DIAGNOSTIC OR THERAPEUTIC PROCEDURES'.