

# CCDC4 Polyclonal Antibody

Catalog # AP68886

## Product Information

---

Application	WB
Primary Accession	<a href="#">Q6ZU67</a>
Reactivity	Human
Host	Rabbit
Clonality	Polyclonal
Calculated MW	58375

## Additional Information

---

Gene ID	389206
Other Names	BEND4; CCDC4; BEN domain-containing protein 4; Coiled-coil domain-containing protein 4
Dilution	WB~~Western Blot: 1/500 - 1/2000. ELISA: 1/40000. Not yet tested in other applications.
Format	Liquid in PBS containing 50% glycerol, 0.5% BSA and 0.09% (W/V) sodium azide.
Storage Conditions	-20°C

## Protein Information

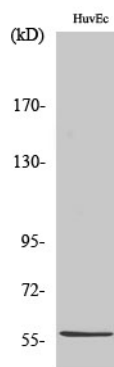
---

Name	BEND4
Synonyms	CCDC4

## Images

---

Western Blot analysis of various cells using CCDC4 Polyclonal Antibody



Please note: All products are 'FOR RESEARCH USE ONLY. NOT FOR USE IN DIAGNOSTIC OR THERAPEUTIC PROCEDURES'.