

LUC7L Antibody (C-term)

Affinity Purified Rabbit Polyclonal Antibody (Pab)

Catalog # AP6889b

Product Information

Application	IHC-P, FC, WB, E
Primary Accession	Q9NQ29
Reactivity	Human
Host	Rabbit
Clonality	Polyclonal
Isotype	Rabbit IgG
Clone Names	RB21055
Calculated MW	43728
Antigen Region	308-336

Additional Information

Gene ID	55692
Other Names	Putative RNA-binding protein Luc7-like 1, Putative SR protein LUC7B1, SR+89, LUC7L, LUC7L1
Target/Specificity	This LUC7L antibody is generated from rabbits immunized with a KLH conjugated synthetic peptide between 308-336 amino acids from the C-terminal region of human LUC7L.
Dilution	IHC-P~~1:100~500 FC~~1:10~50 WB~~1:1000 E~~Use at an assay dependent concentration.
Format	Purified polyclonal antibody supplied in PBS with 0.09% (W/V) sodium azide. This antibody is purified through a protein A column, followed by peptide affinity purification.
Storage	Maintain refrigerated at 2-8°C for up to 2 weeks. For long term storage store at -20°C in small aliquots to prevent freeze-thaw cycles.
Precautions	LUC7L Antibody (C-term) is for research use only and not for use in diagnostic or therapeutic procedures.

Protein Information

Name	LUC7L
Synonyms	LUC7L1
Function	May bind to RNA via its Arg/Ser-rich domain.

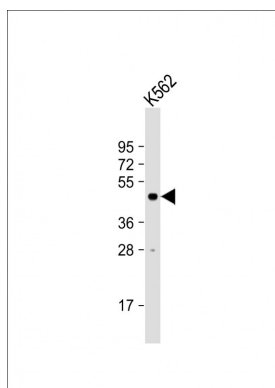
Background

LUC7L may bind to RNA via its Arg/Ser-rich domain.

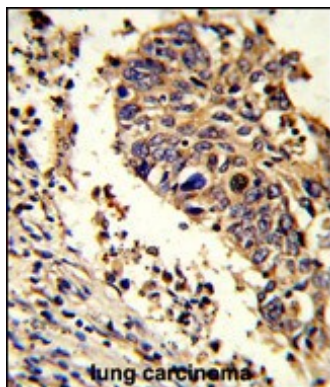
References

Ewing,R.M., et.al., Mol. Syst. Biol. 3, 89 (2007)

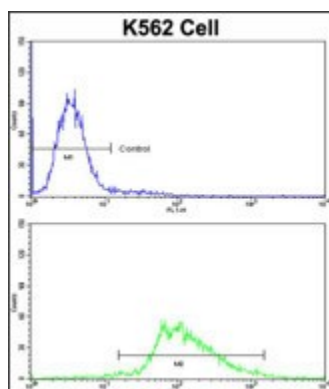
Images



Anti-LUC7L Antibody (C-term) at 1:1000 dilution + K562 whole cell lysate Lysates/proteins at 20 µg per lane. Secondary Goat Anti-Rabbit IgG, (H+L), Peroxidase conjugated at 1/10000 dilution. Predicted band size : 44 kDa Blocking/Dilution buffer: 5% NFDM/TBST.



Formalin-fixed and paraffin-embedded human lung carcinoma reacted with LUC7L Antibody (C-term), which was peroxidase-conjugated to the secondary antibody, followed by DAB staining. This data demonstrates the use of this antibody for immunohistochemistry; clinical relevance has not been evaluated.



Flow cytometric analysis of K562 cells using LUC7L Antibody (C-term)(bottom histogram) compared to a negative control cell (top histogram)FITC-conjugated goat-anti-rabbit secondary antibodies were used for the analysis.

Please note: All products are 'FOR RESEARCH USE ONLY. NOT FOR USE IN DIAGNOSTIC OR THERAPEUTIC PROCEDURES'.