

CD116 Polyclonal Antibody

Catalog # AP68902

Product Information

Application	WB
Primary Accession	P15509
Reactivity	Human
Host	Rabbit
Clonality	Polyclonal
Calculated MW	46207

Additional Information

Gene ID	1438
Other Names	CSF2RA; CSF2R; CSF2RY; Granulocyte-macrophage colony-stimulating factor receptor subunit alpha; GM-CSF-R-alpha; GMCSFR-alpha; GMR-alpha; CDw116; CD antigen CD116
Dilution	WB~~Western Blot: 1/500 - 1/2000. ELISA: 1/20000. Not yet tested in other applications.
Format	Liquid in PBS containing 50% glycerol, 0.5% BSA and 0.09% (W/V) sodium azide.
Storage Conditions	-20°C

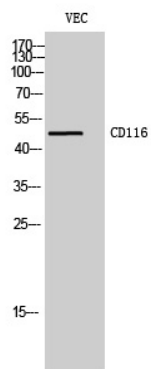
Protein Information

Name	CSF2RA
Synonyms	CSF2R, CSF2RY
Function	Low affinity receptor for granulocyte-macrophage colony- stimulating factor. Transduces a signal that results in the proliferation, differentiation, and functional activation of hematopoietic cells.
Cellular Location	Cell membrane; Single-pass type I membrane protein [Isoform 4]; Secreted.

Background

Low affinity receptor for granulocyte-macrophage colony- stimulating factor. Transduces a signal that results in the proliferation, differentiation, and functional activation of hematopoietic cells.

Images



Western Blot analysis of VEC cells using CD116 Polyclonal Antibody diluted at 1 : 2000

Please note: All products are 'FOR RESEARCH USE ONLY. NOT FOR USE IN DIAGNOSTIC OR THERAPEUTIC PROCEDURES'.