

CD2BP2 Polyclonal Antibody

Catalog # AP68929

Product Information

Application	WB, IHC-P
Primary Accession	O95400
Reactivity	Human, Monkey
Host	Rabbit
Clonality	Polyclonal
Calculated MW	37646

Additional Information

Gene ID	10421
Other Names	CD2BP2; KIAA1178; CD2 antigen cytoplasmic tail-binding protein 2; CD2 cytoplasmic domain-binding protein 2; CD2 tail-binding protein 2
Dilution	WB~~Western Blot: 1/500 - 1/2000. Immunohistochemistry: 1/100 - 1/300. ELISA: 1/40000. Not yet tested in other applications. IHC-P~~N/A
Format	Liquid in PBS containing 50% glycerol, 0.5% BSA and 0.09% (W/V) sodium azide.
Storage Conditions	-20°C

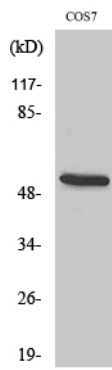
Protein Information

Name	CD2BP2
Synonyms	KIAA1178
Function	Involved in pre-mRNA splicing as component of the U5 snRNP complex that is involved in spliceosome assembly.
Cellular Location	Cytoplasm. Nucleus. Note=Predominantly nuclear.

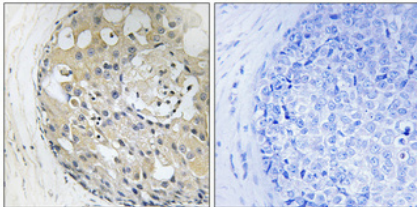
Background

Involved in pre-mRNA splicing as component of the U5 snRNP complex that is involved in spliceosome assembly.

Images



Western Blot analysis of various cells using CD2BP2 Polyclonal Antibody diluted at 1 : 1000



Immunohistochemical analysis of paraffin-embedded Human breast cancer. Antibody was diluted at 1:100(4°,overnight). High-pressure and temperature Tris-EDTA,pH8.0 was used for antigen retrieval. Negative contrl (right) obtained from antibody was pre-absorbed by immunogen peptide.

Please note: All products are 'FOR RESEARCH USE ONLY. NOT FOR USE IN DIAGNOSTIC OR THERAPEUTIC PROCEDURES'.