

CD34 Polyclonal Antibody

Catalog # AP68940

Product Information

Application	WB, IHC-P
Primary Accession	P28906
Reactivity	Human, Mouse
Host	Rabbit
Clonality	Polyclonal
Calculated MW	40716

Additional Information

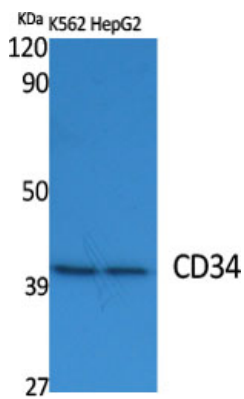
Gene ID	947
Other Names	CD34; Hematopoietic progenitor cell antigen CD34; CD antigen CD34
Dilution	WB~~1:1000 IHC-P~~N/A
Format	Liquid in PBS containing 50% glycerol, 0.5% BSA and 0.09% (W/V) sodium azide.
Storage Conditions	-20°C

Protein Information

Name	CD34
Function	Possible adhesion molecule with a role in early hematopoiesis by mediating the attachment of stem cells to the bone marrow extracellular matrix or directly to stromal cells. Could act as a scaffold for the attachment of lineage specific glycans, allowing stem cells to bind to lectins expressed by stromal cells or other marrow components. Presents carbohydrate ligands to selectins.
Cellular Location	Membrane; Single-pass type I membrane protein.
Tissue Location	Selectively expressed on hematopoietic progenitor cells and the small vessel endothelium of a variety of tissues

Background

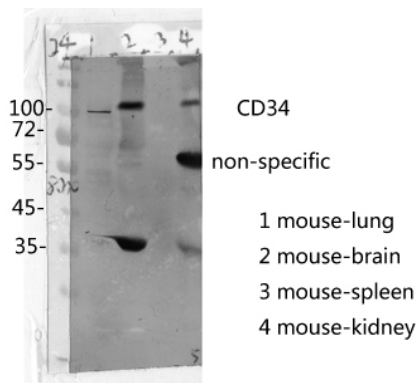
Possible adhesion molecule with a role in early hematopoiesis by mediating the attachment of stem cells to the bone marrow extracellular matrix or directly to stromal cells. Could act as a scaffold for the attachment of lineage specific glycans, allowing stem cells to bind to lectins expressed by stromal cells or other marrow components. Presents carbohydrate ligands to selectins.



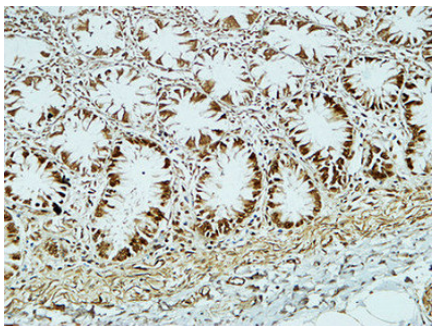
Western Blot analysis of various cells using CD34
Polyclonal Antibody diluted at 1 : 2000



Western Blot analysis of HepG2 cells using CD34
Polyclonal Antibody diluted at 1 : 2000

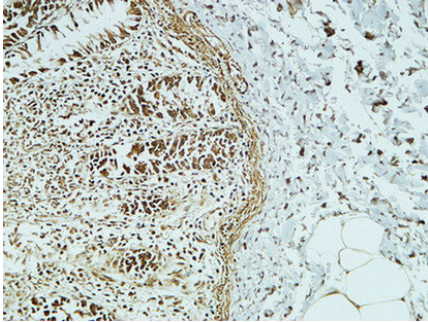
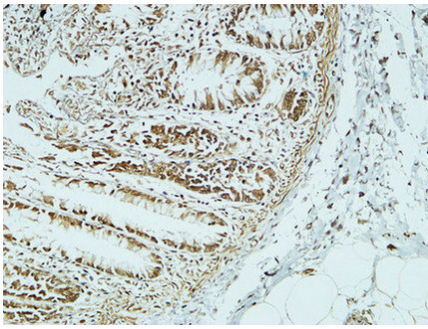


mouse-lung mouse-brain mouse-spleen mouse-kidney

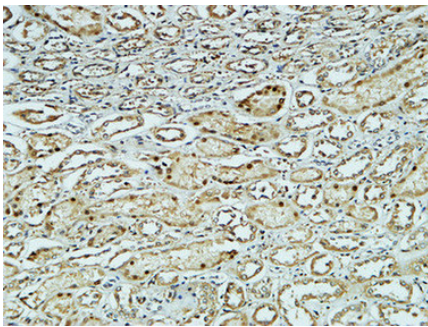


Immunohistochemical analysis of paraffin-embedded
Human colon. 1, Antibody was diluted at
1:200(4°,overnight). 2, High-pressure and temperature
EDTA, pH8.0 was used for antigen retrieval. 3,Secondary
antibody was diluted at 1:200(room temperature, 30min).

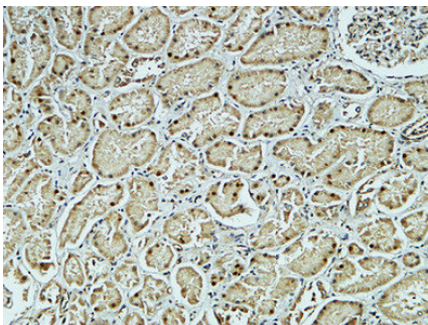
Immunohistochemical analysis of paraffin-embedded
Human colon. 1, Antibody was diluted at
1:200(4°,overnight). 2, High-pressure and temperature
EDTA, pH8.0 was used for antigen retrieval. 3,Secondary
antibody was diluted at 1:200(room temperature, 30min).



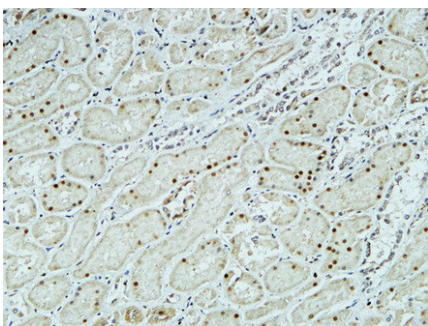
Immunohistochemical analysis of paraffin-embedded Human colon. 1, Antibody was diluted at 1:200(4°,overnight). 2, High-pressure and temperature EDTA, pH8.0 was used for antigen retrieval. 3,Secondary antibody was diluted at 1:200(room temperature, 30min).



Immunohistochemical analysis of paraffin-embedded Human kidney. 1, Antibody was diluted at 1:200(4°,overnight). 2, High-pressure and temperature EDTA, pH8.0 was used for antigen retrieval. 3,Secondary antibody was diluted at 1:200(room temperature, 30min).



Immunohistochemical analysis of paraffin-embedded Human kidney. 1, Antibody was diluted at 1:200(4°,overnight). 2, High-pressure and temperature EDTA, pH8.0 was used for antigen retrieval. 3,Secondary antibody was diluted at 1:200(room temperature, 30min).



Immunohistochemical analysis of paraffin-embedded Human kidney. 1, Antibody was diluted at 1:200(4°,overnight). 2, High-pressure and temperature EDTA, pH8.0 was used for antigen retrieval. 3,Secondary antibody was diluted at 1:200(room temperature, 30min).

Please note: All products are 'FOR RESEARCH USE ONLY. NOT FOR USE IN DIAGNOSTIC OR THERAPEUTIC PROCEDURES'.