

CD75 Polyclonal Antibody

Catalog # AP68959

Product Information

Application	WB, IHC-P
Primary Accession	P15907
Reactivity	Human, Mouse, Rat
Host	Rabbit
Clonality	Polyclonal
Calculated MW	46605

Additional Information

Gene ID	6480
Other Names	ST6GAL1; SIAT1; Beta-galactoside alpha-2; 6-sialyltransferase 1; Alpha 2, 6-ST 1; B-cell antigen CD75; CMP-N-acetylneuraminate-beta-galactosamide-alpha-2, 6-sialyltransferase 1; ST6Gal I; ST6GalI; Sialyltransferase 1
Dilution	WB~~Western Blot: 1/500 - 1/2000. Immunohistochemistry: 1/100 - 1/300. ELISA: 1/40000. Not yet tested in other applications. IHC-P~~N/A
Format	Liquid in PBS containing 50% glycerol, 0.5% BSA and 0.09% (W/V) sodium azide.
Storage Conditions	-20°C

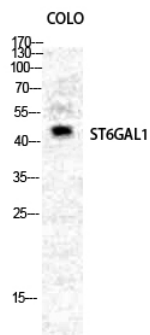
Protein Information

Name	ST6GAL1
Synonyms	SIAT1
Function	Transfers sialic acid from CMP-sialic acid to galactose- containing acceptor substrates. In B lymphocytes, generates neuraminidase-sensitive lymphocyte cell-surface differentiation antigens, such as CDw75, HB-6 and CD76 (PubMed: 1730763).
Cellular Location	Golgi apparatus, Golgi stack membrane; Single-pass type II membrane protein. Secreted {ECO:0000250 UniProtKB:P13721}. Note=Membrane-bound form in trans cisternae of Golgi (PubMed:20378551). Secreted into the body fluid (By similarity). {ECO:0000250 UniProtKB:P13721, ECO:0000269 PubMed:20378551}

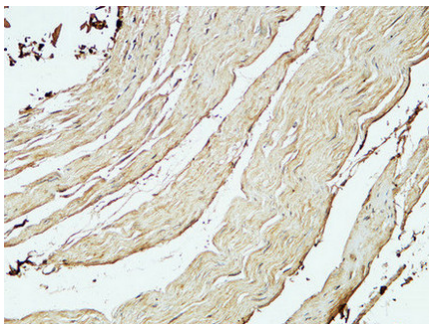
Background

Transfers sialic acid from CMP-sialic acid to galactose- containing acceptor substrates.

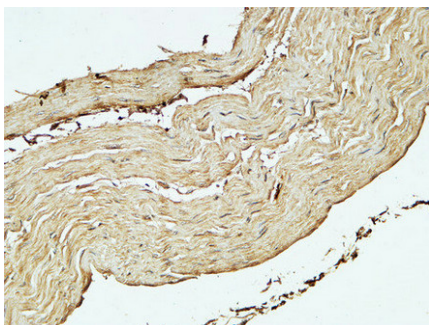
Images



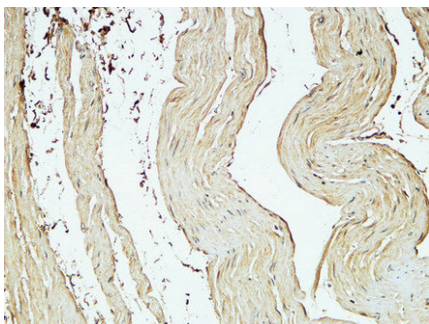
Western Blot analysis of COLO cells using CD75 Polyclonal Antibody diluted at 1 : 2000



Immunohistochemical analysis of paraffin-embedded Human stomach. 1, Antibody was diluted at 1:200(4°,overnight). 2, High-pressure and temperature EDTA, pH8.0 was used for antigen retrieval. 3,Secondary antibody was diluted at 1:200(room temperature, 30min).



Immunohistochemical analysis of paraffin-embedded Human stomach. 1, Antibody was diluted at 1:200(4°,overnight). 2, High-pressure and temperature EDTA, pH8.0 was used for antigen retrieval. 3,Secondary antibody was diluted at 1:200(room temperature, 30min).



Immunohistochemical analysis of paraffin-embedded Human stomach. 1, Antibody was diluted at 1:200(4°,overnight). 2, High-pressure and temperature EDTA, pH8.0 was used for antigen retrieval. 3,Secondary antibody was diluted at 1:200(room temperature, 30min).

Please note: All products are 'FOR RESEARCH USE ONLY. NOT FOR USE IN DIAGNOSTIC OR THERAPEUTIC PROCEDURES'.