

Cdc37 Polyclonal Antibody

Catalog # AP68988

Product Information

Application	WB, IHC-P, IF
Primary Accession	Q16543
Reactivity	Human, Mouse, Rat, Monkey
Host	Rabbit
Clonality	Polyclonal
Calculated MW	44468

Additional Information

Gene ID	11140
Other Names	CDC37; CDC37A; Hsp90 co-chaperone Cdc37; Hsp90 chaperone protein kinase-targeting subunit; p50Cdc37
Dilution	WB~~Western Blot: 1/500 - 1/2000. Immunohistochemistry: 1/100 - 1/300. Immunofluorescence: 1/200 - 1/1000. ELISA: 1/20000. Not yet tested in other applications. IHC-P~~N/A IF~~1:50~200
Format	Liquid in PBS containing 50% glycerol, 0.5% BSA and 0.09% (W/V) sodium azide.
Storage Conditions	-20°C

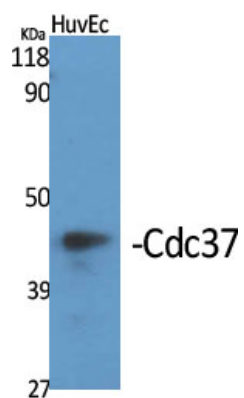
Protein Information

Name	CDC37
Synonyms	CDC37A
Function	Co-chaperone that binds to numerous kinases and promotes their interaction with the Hsp90 complex, resulting in stabilization and promotion of their activity (PubMed: 8666233). Inhibits HSP90AA1 ATPase activity (PubMed: 23569206).
Cellular Location	Cytoplasm.

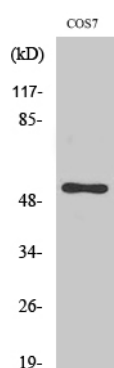
Background

Co-chaperone that binds to numerous kinases and promotes their interaction with the Hsp90 complex, resulting in stabilization and promotion of their activity (PubMed:[8666233](#)). Inhibits HSP90AA1 ATPase activity (PubMed:[23569206](#)).

Images



Western Blot analysis of various cells using Cdc37 Polyclonal Antibody



Western Blot analysis of MCF7 cells using Cdc37 Polyclonal Antibody

Please note: All products are 'FOR RESEARCH USE ONLY. NOT FOR USE IN DIAGNOSTIC OR THERAPEUTIC PROCEDURES'.