

Cdc42EP2 Polyclonal Antibody

Catalog # AP68991

Product Information

Application	WB, IHC-P, IF, ICC, E
Primary Accession	O14613
Reactivity	Human, Mouse, Rat
Host	Rabbit
Clonality	Polyclonal
Calculated MW	22484

Additional Information

Gene ID	10435
Other Names	CDC42EP2; BORG1; CEP2; Cdc42 effector protein 2; Binder of Rho GTPases 1
Dilution	WB~~Western Blot: 1/500 - 1/2000. Immunohistochemistry: 1/100 - 1/300. ELISA: 1/40000. Not yet tested in other applications. IHC-P~~N/A IF~~1:50~200 ICC~~N/A E~~N/A
Format	Liquid in PBS containing 50% glycerol, 0.5% BSA and 0.09% (W/V) sodium azide.
Storage Conditions	-20°C

Protein Information

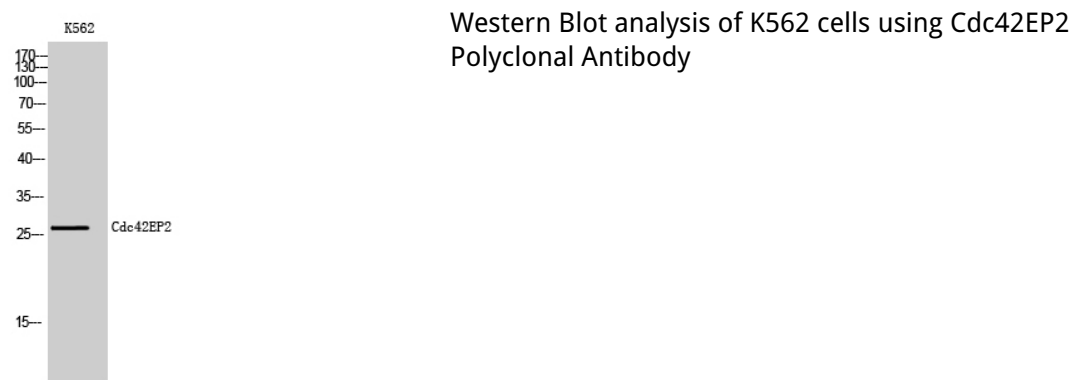
Name	CDC42EP2
Synonyms	BORG1, CEP2
Function	Probably involved in the organization of the actin cytoskeleton. May act downstream of CDC42 to induce actin filament assembly leading to cell shape changes. Induces pseudopodia formation in fibroblasts in a CDC42-dependent manner.
Cellular Location	Endomembrane system; Peripheral membrane protein. Cytoplasm, cytoskeleton
Tissue Location	Highly expressed in the heart. Weakly expressed in the pancreas and liver.

Background

Probably involved in the organization of the actin cytoskeleton. May act downstream of CDC42 to induce actin filament assembly leading to cell shape changes. Induces pseudopodia formation in fibroblasts in a

CDC42-dependent manner.

Images



Please note: All products are 'FOR RESEARCH USE ONLY. NOT FOR USE IN DIAGNOSTIC OR THERAPEUTIC PROCEDURES'.