

Cdc7 Polyclonal Antibody

Catalog # AP69001

Product Information

Application	WB, IHC-P
Primary Accession	O00311
Reactivity	Human
Host	Rabbit
Clonality	Polyclonal
Calculated MW	63888

Additional Information

Gene ID	8317
Other Names	CDC7; CDC7L1; Cell division cycle 7-related protein kinase; CDC7-related kinase; HsCdc7; huCdc7
Dilution	WB~~Western Blot: 1/500 - 1/2000. Immunohistochemistry: 1/100 - 1/300. ELISA: 1/5000. Not yet tested in other applications. IHC-P~~N/A
Format	Liquid in PBS containing 50% glycerol, 0.5% BSA and 0.09% (W/V) sodium azide.
Storage Conditions	-20°C

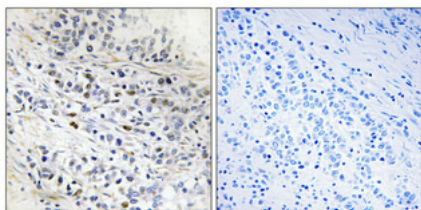
Protein Information

Name	CDC7 (HGNC:1745)
Synonyms	CDC7L1
Function	Kinase involved in initiation of DNA replication. Phosphorylates critical substrates that regulate the G1/S phase transition and initiation of DNA replication, such as MCM proteins and CLASPIN.
Cellular Location	Nucleus.

Background

Seems to phosphorylate critical substrates that regulate the G1/S phase transition and/or DNA replication. Can phosphorylates MCM2 and MCM3.

Images



Immunohistochemical analysis of paraffin-embedded Human lung cancer. Antibody was diluted at 1:100(4°,overnight). High-pressure and temperature Tris-EDTA,pH8.0 was used for antigen retrieval. Negative contrl (right) obtaned from antibody was pre-absorbed by immunogen peptide.

Please note: All products are 'FOR RESEARCH USE ONLY. NOT FOR USE IN DIAGNOSTIC OR THERAPEUTIC PROCEDURES'.