

CdkL4 Polyclonal Antibody

Catalog # AP69025

Product Information

Application	WB, IHC-P, IF, ICC, E
Primary Accession	Q5MAI5
Reactivity	Human, Rat, Mouse
Host	Rabbit
Clonality	Polyclonal
Calculated MW	43384

Additional Information

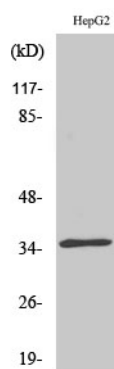
Gene ID	344387
Other Names	CDKL4; Cyclin-dependent kinase-like 4
Dilution	WB~~Western Blot: 1/500 - 1/2000. Immunohistochemistry: 1/100 - 1/300. Immunofluorescence: 1/200 - 1/1000. ELISA: 1/40000. Not yet tested in other applications. IHC-P~~N/A IF~~1:50~200 ICC~~N/A E~~N/A
Format	Liquid in PBS containing 50% glycerol, 0.5% BSA and 0.09% (W/V) sodium azide.
Storage Conditions	-20°C

Protein Information

Name	CDKL4
Cellular Location	Cytoplasm.

Images

Western Blot analysis of various cells using CdkL4
Polyclonal Antibody diluted at 1 : 500



Please note: All products are 'FOR RESEARCH USE ONLY. NOT FOR USE IN DIAGNOSTIC OR THERAPEUTIC PROCEDURES'.