

Centrobin Polyclonal Antibody

Catalog # AP69038

Product Information

Application	WB, IHC-P
Primary Accession	Q8N137
Reactivity	Human
Host	Rabbit
Clonality	Polyclonal
Calculated MW	101253

Additional Information

Gene ID	116840
Other Names	CNTROB; LIP8; PP1221; Centrobin; Centrosomal BRCA2-interacting protein; LYST-interacting protein 8
Dilution	WB~~Western Blot: 1/500 - 1/2000. Immunohistochemistry: 1/100 - 1/300. ELISA: 1/5000. Not yet tested in other applications. IHC-P~~N/A
Format	Liquid in PBS containing 50% glycerol, 0.5% BSA and 0.09% (W/V) sodium azide.
Storage Conditions	-20°C

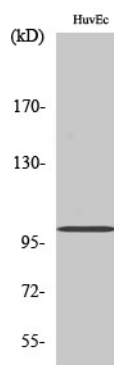
Protein Information

Name	CNTROB
Synonyms	LIP8
Function	Required for centriole duplication. Inhibition of centriole duplication leading to defects in cytokinesis.
Cellular Location	Cytoplasm, cytoskeleton, microtubule organizing center, centrosome, centriole Note=Centriole-associated, asymmetrically localizes to the daughter centriole
Tissue Location	Widely expressed (at protein level). Highly expressed in testis. Also expressed in spleen, thymus, prostate, small intestine, colon and peripheral blood leukocytes

Background

Required for centriole duplication. Inhibition of centriole duplication leading to defects in cytokinesis.

Images



Western Blot analysis of various cells using Centrobins Polyclonal Antibody

Please note: All products are 'FOR RESEARCH USE ONLY. NOT FOR USE IN DIAGNOSTIC OR THERAPEUTIC PROCEDURES'.