

CEP170 Polyclonal Antibody

Catalog # AP69041

Product Information

Application	WB, IHC-P
Primary Accession	Q5SW79
Reactivity	Human
Host	Rabbit
Clonality	Polyclonal
Calculated MW	175293

Additional Information

Gene ID	9859
Other Names	CEP170; FAM68A; KAB; KIAA0470; Centrosomal protein of 170 kDa; Cep170; KARP-1-binding protein; KARP1-binding protein
Dilution	WB~~Western Blot: 1/500 - 1/2000. Immunohistochemistry: 1/100 - 1/300. ELISA: 1/40000. Not yet tested in other applications. IHC-P~~N/A
Format	Liquid in PBS containing 50% glycerol, 0.5% BSA and 0.09% (W/V) sodium azide.
Storage Conditions	-20°C

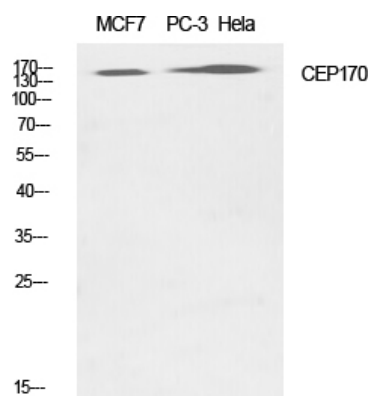
Protein Information

Name	CEP170
Synonyms	FAM68A, KAB, KIAA0470
Function	Plays a role in microtubule organization (PubMed: 15616186). Required for centriole subdistal appendage assembly (PubMed: 28422092).
Cellular Location	Cytoplasm, cytoskeleton, microtubule organizing center, centrosome. Cytoplasm, cytoskeleton, microtubule organizing center, centrosome, centriole. Cytoplasm, cytoskeleton, spindle. Note=Associated with the mature mother centriole. Associated with spindle microtubules during mitosis. Localizes to the distal appendage region of the centriole (PubMed:31789463). Localizes at the centriole proximal ends (PubMed:31789463).

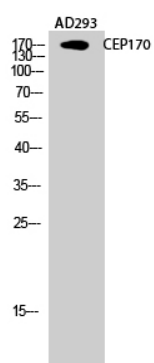
Background

Plays a role in microtubule organization (PubMed: [15616186](#)). Required for centriole subdistal appendage assembly (PubMed:[28422092](#)).

Images



Western Blot analysis of various cells using CEP170
Polyclonal Antibody diluted at 1 : 1000



Western Blot analysis of AD293 cells using CEP170
Polyclonal Antibody diluted at 1 : 1000

Please note: All products are 'FOR RESEARCH USE ONLY. NOT FOR USE IN DIAGNOSTIC OR THERAPEUTIC PROCEDURES'.