

CEP70 Polyclonal Antibody

Catalog # AP69047

Product Information

Application	WB, IHC-P
Primary Accession	Q8NHQ1
Reactivity	Human, Monkey
Host	Rabbit
Clonality	Polyclonal
Calculated MW	69752

Additional Information

Gene ID	80321
Other Names	CEP70; BITE; Centrosomal protein of 70 kDa; Cep70; p10-binding protein
Dilution	WB~~Western Blot: 1/500 - 1/2000. Immunohistochemistry: 1/100 - 1/300. ELISA: 1/40000. Not yet tested in other applications. IHC-P~~Western Blot: 1/500 - 1/2000. Immunohistochemistry: 1/100 - 1/300. ELISA: 1/40000. Not yet tested in other applications.
Format	Liquid in PBS containing 50% glycerol, 0.5% BSA and 0.09% (W/V) sodium azide.
Storage Conditions	-20°C

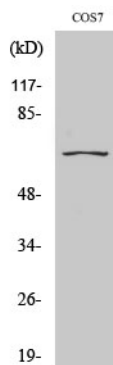
Protein Information

Name	CEP70
Synonyms	BITE
Function	Plays a role in the organization of both preexisting and nascent microtubules in interphase cells. During mitosis, required for the organization and orientation of the mitotic spindle.
Cellular Location	Cytoplasm, cytoskeleton, microtubule organizing center, centrosome. Note=Localized at the center of the radial microtubule array in interphase and at the spindle poles during various stages of mitosis

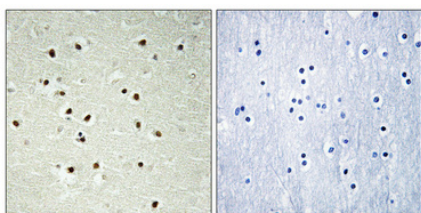
Background

Plays a role in the organization of both preexisting and nascent microtubules in interphase cells. During mitosis, required for the organization and orientation of the mitotic spindle.

Images



Western Blot analysis of various cells using CEP70
Polyclonal Antibody diluted at 1 : 2000



Immunohistochemical analysis of paraffin-embedded
Human brain. Antibody was diluted at
1:100(4°,overnight). High-pressure and temperature
Tris-EDTA,pH8.0 was used for antigen retrieval. Negative
control (right) obtained from antibody was pre-absorbed by
immunogen peptide.

Please note: All products are 'FOR RESEARCH USE ONLY. NOT FOR USE IN DIAGNOSTIC OR THERAPEUTIC PROCEDURES'.