

Cerebellin 2 Polyclonal Antibody

Catalog # AP69052

Product Information

Application	WB, E
Primary Accession	Q8IUJ8
Reactivity	Human, Mouse, Rat, Monkey
Host	Rabbit
Clonality	Polyclonal
Calculated MW	24084

Additional Information

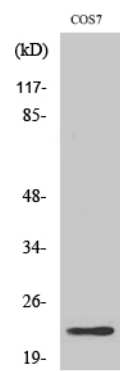
Gene ID	147381
Other Names	CBLN2; Cerebellin-2
Dilution	WB~~Western Blot: 1/500 - 1/2000. ELISA: 1/40000. Not yet tested in other applications. E~~N/A
Format	Liquid in PBS containing 50% glycerol, 0.5% BSA and 0.09% (W/V) sodium azide.
Storage Conditions	-20°C

Protein Information

Name	CBLN2 (HGNC:1544)
Function	Acts as a synaptic organizer in specific subsets of neurons in the brain. Essential for long-term maintenance but not establishment of excitatory synapses. Functions as part of a trans-synaptic complex by binding to postsynaptic GRID1 and presynaptic neuroligins. This interaction helps regulate the activity of NMDA and AMPA receptors at hippocampal synapses without affecting synapse formation. NRXN1B-CBLN2- GRID1 complex transduce presynaptic signals into postsynaptic NMDAR response. NRXN3B-CBLN2-GRID1 complex transduce presynaptic signals into postsynaptic AMPAR response.
Cellular Location	Secreted {ECO:0000250 UniProtKB:Q8BGU2}.

Background

May play role in synaptogenesis induction.



Western Blot analysis of various cells using Cerebellin 2 Polyclonal Antibody

Please note: All products are 'FOR RESEARCH USE ONLY. NOT FOR USE IN DIAGNOSTIC OR THERAPEUTIC PROCEDURES'.