

# Cerebellin 4 Polyclonal Antibody

Catalog # AP69054

## Product Information

---

<b>Application</b>	WB, IHC-P
<b>Primary Accession</b>	<a href="#">Q9NTU7</a>
<b>Reactivity</b>	Human, Mouse, Monkey
<b>Host</b>	Rabbit
<b>Clonality</b>	Polyclonal
<b>Calculated MW</b>	21808

## Additional Information

---

<b>Gene ID</b>	140689
<b>Other Names</b>	CBLN4; CBLNL1; Cerebellin-4; Cerebellin-like glycoprotein 1
<b>Dilution</b>	WB~~Western Blot: 1/500 - 1/2000. Immunohistochemistry: 1/100 - 1/300. ELISA: 1/40000. Not yet tested in other applications. IHC-P~~N/A
<b>Format</b>	Liquid in PBS containing 50% glycerol, 0.5% BSA and 0.09% (W/V) sodium azide.
<b>Storage Conditions</b>	-20°C

## Protein Information

---

<b>Name</b>	CBLN4
<b>Synonyms</b>	CBLNL1
<b>Function</b>	Acts as a synaptic organizer in specific subsets of neurons in the brain (By similarity). Essential for the formation and maintenance of inhibitory GABAergic synapses (By similarity). Promotes the development of dendrite-targeting inhibitory GABAergic synapses made by somatostatin-positive interneurons (By similarity). May contribute to the function of ventral medial habenula region of the brain implicated in the regulation of anxiety-related behaviors (By similarity). May play a role in CBLN3 export from the endoplasmic reticulum and secretion (By similarity).
<b>Cellular Location</b>	Secreted {ECO:0000250 UniProtKB:Q8BME9}. Synapse {ECO:0000250 UniProtKB:Q8BME9}. Note=Detected at GABAergic synapses {ECO:0000250 UniProtKB:Q8BME9}

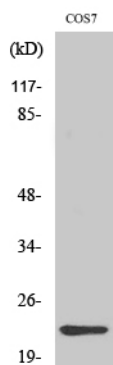
## Background

---

May be involved in synaptic functions in the CNS. May play a role in CBLN3 export from the endoplasmic reticulum and secretion (By similarity).

## Images

---



Western Blot analysis of various cells using Cerebellin 4 Polyclonal Antibody

Please note: All products are 'FOR RESEARCH USE ONLY. NOT FOR USE IN DIAGNOSTIC OR THERAPEUTIC PROCEDURES'.