

GAB2 Antibody (N-term)

Affinity Purified Rabbit Polyclonal Antibody (Pab)

Catalog # AP6908A

Product Information

Application	FC, WB, E
Primary Accession	Q9UQC2
Other Accession	Q9EQH1 , Q9Z1S8
Reactivity	Human
Predicted	Mouse, Rat
Host	Rabbit
Clonality	Polyclonal
Isotype	Rabbit IgG
Clone Names	RB21209
Calculated MW	74458
Antigen Region	3-30

Additional Information

Gene ID	9846
Other Names	GRB2-associated-binding protein 2, GRB2-associated binder 2, Growth factor receptor bound protein 2-associated protein 2, pp100, GAB2, KIAA0571
Target/Specificity	This GAB2 antibody is generated from rabbits immunized with a KLH conjugated synthetic peptide between 3-30 amino acids from the N-terminal region of human GAB2.
Dilution	FC~~1:10~50 WB~~1:1000 E~~Use at an assay dependent concentration.
Format	Purified polyclonal antibody supplied in PBS with 0.09% (W/V) sodium azide. This antibody is purified through a protein A column, followed by peptide affinity purification.
Storage	Maintain refrigerated at 2-8°C for up to 2 weeks. For long term storage store at -20°C in small aliquots to prevent freeze-thaw cycles.
Precautions	GAB2 Antibody (N-term) is for research use only and not for use in diagnostic or therapeutic procedures.

Protein Information

Name	GAB2
Synonyms	KIAA0571

Function	Adapter protein which acts downstream of several membrane receptors including cytokine, antigen, hormone, cell matrix and growth factor receptors to regulate multiple signaling pathways. Regulates osteoclast differentiation mediating the TNFRSF11A/RANK signaling. In allergic response, it plays a role in mast cells activation and degranulation through PI-3-kinase regulation. Also involved in the regulation of cell proliferation and hematopoiesis.
Cellular Location	Cytoplasm. Cell membrane. Membrane raft {ECO:0000250 UniProtKB:Q9Z1S8}

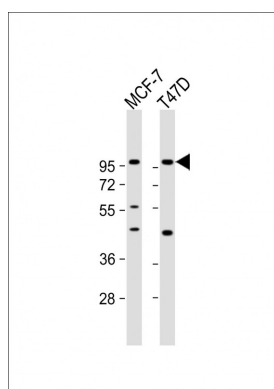
Background

GAB2 is the principal activator of phosphatidylinositol-3 kinase in response to activation of the high affinity IgE receptor.

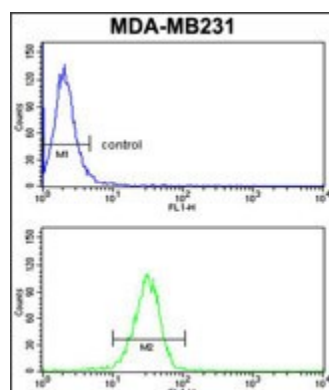
References

Yamasaki,S., et.al., J. Biol. Chem. 276 (48), 45175-45183 (2001)

Images



All lanes : Anti-GAB2 Antibody (N-term) at 1:1000 dilution
Lane 1: MCF-7 whole cell lysate Lane 2: T47D whole cell lysate
Lysates/proteins at 20 µg per lane. Secondary Goat Anti-Rabbit IgG, (H+L), Peroxidase conjugated at 1/10000 dilution. Predicted band size : 74 kDa
Blocking/Dilution buffer: 5% NFDM/TBST.



GAB2 Antibody (N-term) (Cat.#AP6908a) flow cytometry analysis of MDA-MB231 cells (bottom histogram) compared to a negative control cell (top histogram). FITC-conjugated goat-anti-rabbit secondary antibodies were used for the analysis.

Citations

- [In vivo multiplexed interrogation of amplified genes identifies GAB2 as an ovarian cancer oncogene.](#)