

RAGE Antibody (Center)

Affinity Purified Rabbit Polyclonal Antibody (Pab)

Catalog # AP6910c

Product Information

Application	IF, WB, E
Primary Accession	Q9UQ07
Reactivity	Human
Host	Rabbit
Clonality	Polyclonal
Isotype	Rabbit IgG
Clone Names	RB21217
Calculated MW	48014
Antigen Region	206-234

Additional Information

Gene ID	5891
Other Names	MAPK/MAK/MRK overlapping kinase, MOK protein kinase, Renal tumor antigen 1, RAGE-1, MOK, RAGE, RAGE1
Target/Specificity	This RAGE antibody is generated from rabbits immunized with a KLH conjugated synthetic peptide between 206-234 amino acids from the Central region of human RAGE.
Dilution	IF~~1:10~50 WB~~1:1000 E~~Use at an assay dependent concentration.
Format	Purified polyclonal antibody supplied in PBS with 0.09% (W/V) sodium azide. This antibody is purified through a protein A column, followed by peptide affinity purification.
Storage	Maintain refrigerated at 2-8°C for up to 2 weeks. For long term storage store at -20°C in small aliquots to prevent freeze-thaw cycles.
Precautions	RAGE Antibody (Center) is for research use only and not for use in diagnostic or therapeutic procedures.

Protein Information

Name	MOK
Synonyms	RAGE, RAGE1
Function	Able to phosphorylate several exogenous substrates and to undergo autophosphorylation. Negatively regulates cilium length in a cAMP and

mTORC1 signaling-dependent manner.

Cellular Location

Cytoplasm {ECO:0000250|UniProtKB:Q9WVS4}. Cell projection, cilium {ECO:0000250|UniProtKB:Q9WVS4}. Nucleus {ECO:0000250|UniProtKB:Q9WVS4}

Tissue Location

Expressed in heart, brain, lung, kidney, and pancreas, and at very low levels in placenta, liver and skeletal muscle. Detected in retina

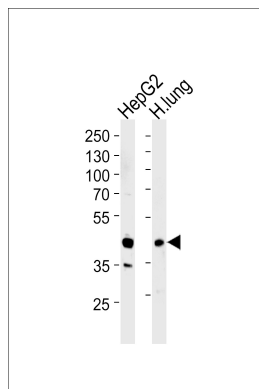
Background

RAGE is able to phosphorylate several exogenous substrates and to undergo autophosphorylation.

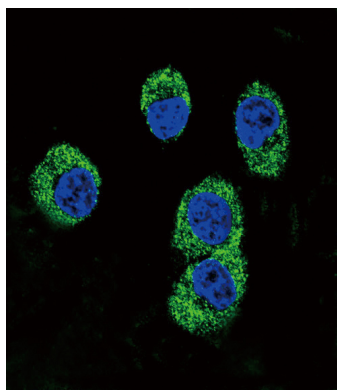
References

Peng,W.H., et.al., Arch. Med. Res. 40 (5), 393-398 (2009)

Images



Western blot analysis of lysates from HepG2 cell line and human lung tissue lysates (from left to right), using RAGE Antibody (Center)(Cat. #AP6910c). AP6910c was diluted at 1:1000 at each lane. A goat anti-rabbit IgG H&L(HRP) at 1:5000 dilution was used as the secondary antibody. Lysates at 35ug per lane.



Confocal immunofluorescent analysis of RAGE Antibody (Center)(Cat#AP6910c) with MDA-MB231 cell followed by Alexa Fluor 488-conjugated goat anti-rabbit IgG (green).DAPI was used to stain the cell nuclear (blue).

Citations

- [AGEs-Induced Calcification and Apoptosis in Human Vascular Smooth Muscle Cells Is Reversed by Inhibition of Autophagy](#)

Please note: All products are 'FOR RESEARCH USE ONLY. NOT FOR USE IN DIAGNOSTIC OR THERAPEUTIC PROCEDURES'.