

EPS8L3 Antibody (N-term)

Affinity Purified Rabbit Polyclonal Antibody (Pab)

Catalog # AP6911a

Product Information

Application	IHC-P, FC, WB, E
Primary Accession	Q8TE67
Other Accession	Q91WL0
Reactivity	Human
Predicted	Mouse
Host	Rabbit
Clonality	Polyclonal
Isotype	Rabbit IgG
Clone Names	RB21222
Calculated MW	66861
Antigen Region	1-30

Additional Information

Gene ID	79574
Other Names	Epidermal growth factor receptor kinase substrate 8-like protein 3, EPS8-like protein 3, Epidermal growth factor receptor pathway substrate 8-related protein 3, EPS8-related protein 3, EPS8L3, EPS8R3
Target/Specificity	This EPS8L3 antibody is generated from rabbits immunized with a KLH conjugated synthetic peptide between 1-30 amino acids from the N-terminal region of human EPS8L3.
Dilution	IHC-P~~1:100~500 FC~~1:10~50 WB~~1:1000 E~~Use at an assay dependent concentration.
Format	Purified polyclonal antibody supplied in PBS with 0.09% (W/V) sodium azide. This antibody is purified through a protein A column, followed by peptide affinity purification.
Storage	Maintain refrigerated at 2-8°C for up to 2 weeks. For long term storage store at -20°C in small aliquots to prevent freeze-thaw cycles.
Precautions	EPS8L3 Antibody (N-term) is for research use only and not for use in diagnostic or therapeutic procedures.

Protein Information

Name	EPS8L3
-------------	--------

Synonyms

EPS8R3

Cellular Location

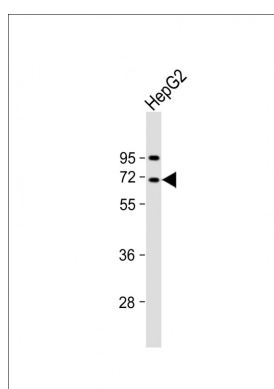
Cytoplasm.

Background

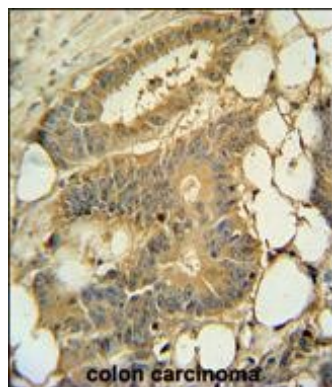
EPS8L3 is related to epidermal growth factor receptor pathway substrate 8 (EPS8), a substrate for the epidermal growth factor receptor. The function of this protein is unknown.

References

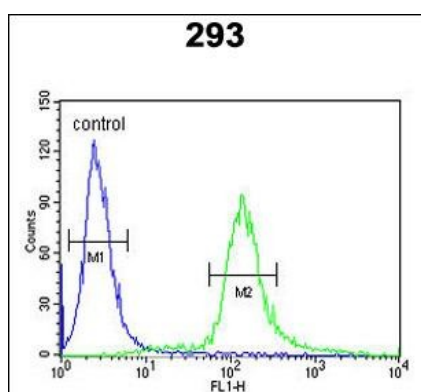
Tocchetti,A., et.al., Genomics 81 (2), 234-244 (2003)

Images

Anti-EPS8L3 Antibody (N-term) at 1:1000 dilution + HepG2 whole cell lysate Lysates/proteins at 20 µg per lane. Secondary Goat Anti-Rabbit IgG, (H+L), Peroxidase conjugated at 1/10000 dilution. Predicted band size : 67 kDa Blocking/Dilution buffer: 5% NFDM/TBST.



EPS8L3 Antibody (N-term) (Cat. #AP6911a) immunohistochemistry analysis in formalin fixed and paraffin embedded human colon carcinoma followed by peroxidase conjugation of the secondary antibody and DAB staining. This data demonstrates the use of the EPS8L3 Antibody (N-term) for immunohistochemistry. Clinical relevance has not been evaluated.



EPS8L3 Antibody (N-term) (Cat. #AP6911a) flow cytometric analysis of 293 cells (right histogram) compared to a negative control cell (left histogram). FITC-conjugated goat-anti-rabbit secondary antibodies were used for the analysis.

Please note: All products are 'FOR RESEARCH USE ONLY. NOT FOR USE IN DIAGNOSTIC OR THERAPEUTIC PROCEDURES'.