

CKR-7 Polyclonal Antibody

Catalog # AP69121

Product Information

Application	WB, IF
Primary Accession	P32248
Reactivity	Human, Monkey
Host	Rabbit
Clonality	Polyclonal
Calculated MW	42874

Additional Information

Gene ID	1236
Other Names	CCR7; CMKBR7; EBI1; EVI1; C-C chemokine receptor type 7; C-C CKR-7; CC-CKR-7; CCR-7; BLR2; CDw197; Epstein-Barr virus-induced G-protein coupled receptor 1; EBI1; EBV-induced G-protein coupled receptor 1; MIP-3 beta receptor; CD antigen CD19
Dilution	WB~~Western Blot: 1/500 - 1/2000. Immunofluorescence: 1/200 - 1/1000. ELISA: 1/40000. Not yet tested in other applications. IF~~1:50~200
Format	Liquid in PBS containing 50% glycerol, 0.5% BSA and 0.09% (W/V) sodium azide.
Storage Conditions	-20°C

Protein Information

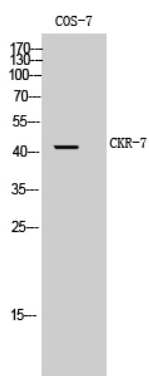
Name	CCR7
Synonyms	CMKBR7, EBI1, EVI1
Function	Receptor for the MIP-3-beta chemokine. Probable mediator of EBV effects on B-lymphocytes or of normal lymphocyte functions.
Cellular Location	Cell membrane; Multi-pass membrane protein.
Tissue Location	Expressed in various lymphoid tissues and activated B- and T-lymphocytes, strongly up-regulated in B-cells infected with Epstein-Barr virus and T-cells infected with herpesvirus 6 or 7

Background

Receptor for the MIP-3-beta chemokine. Probable mediator of EBV effects on B-lymphocytes or of normal

lymphocyte functions.

Images



Western Blot analysis of COS-7 cells using CKR-7 Polyclonal Antibody

Please note: All products are 'FOR RESEARCH USE ONLY. NOT FOR USE IN DIAGNOSTIC OR THERAPEUTIC PROCEDURES'.