

Cks1 Polyclonal Antibody

Catalog # AP69122

Product Information

Application	WB, IF
Primary Accession	P61024
Reactivity	Human, Mouse
Host	Rabbit
Clonality	Polyclonal
Calculated MW	9660

Additional Information

Gene ID	1163
Other Names	CKS1B; CKS1; PNAS-143; PNAS-16; Cyclin-dependent kinases regulatory subunit 1; CKS-1
Dilution	WB~~Western Blot: 1/500 - 1/2000. Immunofluorescence: 1/200 - 1/1000. ELISA: 1/20000. Not yet tested in other applications. IF~~1:50~200
Format	Liquid in PBS containing 50% glycerol, 0.5% BSA and 0.09% (W/V) sodium azide.
Storage Conditions	-20°C

Protein Information

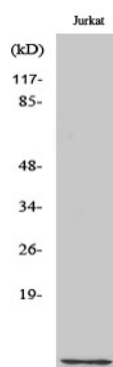
Name	CKS1B
Synonyms	CKS1
Function	Binds to the catalytic subunit of the cyclin dependent kinases and is essential for their biological function.

Background

Binds to the catalytic subunit of the cyclin dependent kinases and is essential for their biological function.

Images

Western Blot analysis of various cells using Cks1 Polyclonal Antibody cells nucleus extracted by Minute TM Cytoplasmic and Nuclear Fractionation kit



(SC-003, Invent biotech, MN, USA).

Please note: All products are 'FOR RESEARCH USE ONLY. NOT FOR USE IN DIAGNOSTIC OR THERAPEUTIC PROCEDURES'.