

Claudin-3 Polyclonal Antibody

Catalog # AP69131

Product Information

Application	WB, IHC-P
Primary Accession	O15551
Reactivity	Human
Host	Rabbit
Clonality	Polyclonal
Calculated MW	23319

Additional Information

Gene ID	1365
Other Names	CLDN3; C7orf1; CPETR2; Claudin-3; Clostridium perfringens enterotoxin receptor 2; CPE-R 2; CPE-receptor 2; Rat ventral prostate.1 protein homolog; hRVP1
Dilution	WB~~Western Blot: 1/500 - 1/2000. Immunohistochemistry: 1/100 - 1/300. ELISA: 1/5000. Not yet tested in other applications. IHC-P~~N/A
Format	Liquid in PBS containing 50% glycerol, 0.5% BSA and 0.09% (W/V) sodium azide.
Storage Conditions	-20°C

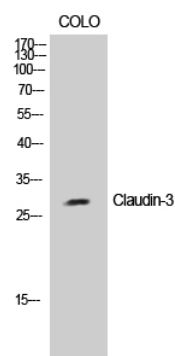
Protein Information

Name	CLDN3
Synonyms	C7orf1, CPETR2
Function	Barrier-forming claudin. Plays a major role in tight junction-specific obliteration of the intercellular space, through calcium-independent cell-adhesion activity.
Cellular Location	Cell junction, tight junction. Cell membrane; Multi-pass membrane protein

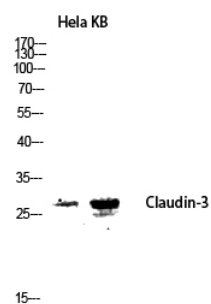
Background

Plays a major role in tight junction-specific obliteration of the intercellular space, through calcium-independent cell-adhesion activity.

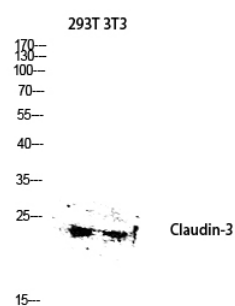
Images



Western Blot analysis of COLO cells using Claudin-3
Polyclonal Antibody diluted at 1 : 2000



Western blot analysis of Hela KB lysis using Claudin-3
antibody. Antibody was diluted at 1:2000



Western blot analysis of 293T 3T3 lysis using Claudin-3
antibody. Antibody was diluted at 1:2000

Please note: All products are 'FOR RESEARCH USE ONLY. NOT FOR USE IN DIAGNOSTIC OR THERAPEUTIC PROCEDURES'.