

CLC-6 Polyclonal Antibody

Catalog # AP69143

Product Information

Application	WB
Primary Accession	P51797
Reactivity	Human, Mouse, Rat, Monkey
Host	Rabbit
Clonality	Polyclonal
Calculated MW	97289

Additional Information

Gene ID	1185
Other Names	CLCN6; KIAA0046; Chloride transport protein 6; Chloride channel protein 6; CIC-6
Dilution	WB~~Western Blot: 1/500 - 1/2000. ELISA: 1/40000. Not yet tested in other applications.
Format	Liquid in PBS containing 50% glycerol, 0.5% BSA and 0.09% (W/V) sodium azide.
Storage Conditions	-20°C

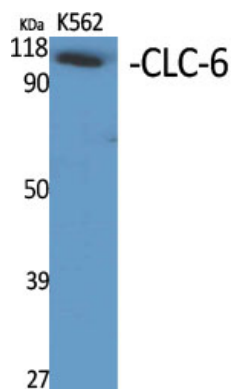
Protein Information

Name	CLCN6 (HGNC:2024)
Synonyms	KIAA0046
Function	Voltage-gated channel mediating the exchange of chloride ions against protons. Functions as antiporter and contributes to the acidification of the late endosome lumen. The CLC channel family contains both chloride channels and proton-coupled anion transporters that exchange chloride or another anion for protons. The presence of conserved gating glutamate residues is typical for family members that function as antiporters.
Cellular Location	Late endosome membrane; Multi-pass membrane protein
Tissue Location	Testis, ovary, small intestine, brain and skeletal muscle. Low level expression in aortic and coronary vascular smooth muscle cells, and aortic endothelial cells. Isoform 3 is only detected in kidney.

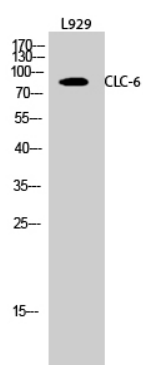
Background

Chloride transport protein, initially identified as voltage-gated chloride channel. The presence of the conserved gating glutamate residues suggests that it functions as antiporter.

Images



Western Blot analysis of various cells using CLC-6 Polyclonal Antibody diluted at 1 : 500



Western Blot analysis of L929 cells using CLC-6 Polyclonal Antibody diluted at 1 : 500

Please note: All products are 'FOR RESEARCH USE ONLY. NOT FOR USE IN DIAGNOSTIC OR THERAPEUTIC PROCEDURES'.