

# CLCC1 Polyclonal Antibody

Catalog # AP69145

## Product Information

Application	WB, IF
Primary Accession	<a href="#">Q96S66</a>
Reactivity	Human
Host	Rabbit
Clonality	Polyclonal
Calculated MW	62023

## Additional Information

Gene ID	23155
Other Names	CLCC1; KIAA0761; MCLC; Chloride channel CLIC-like protein 1; Mid-1-related chloride channel protein 1
Dilution	WB~~Western Blot: 1/500 - 1/2000. Immunofluorescence: 1/200 - 1/1000. ELISA: 1/40000. Not yet tested in other applications. IF~~1:50~200
Format	Liquid in PBS containing 50% glycerol, 0.5% BSA and 0.09% (W/V) sodium azide.
Storage Conditions	-20°C

## Protein Information

Name	CLCC1 {ECO:0000303 PubMed:37142673, ECO:0000312 HGNC:HGNC:29675}
Function	Anion-selective channel with Ca(2+)-dependent and voltage- independent gating. Permeable to small monovalent anions with selectivity for bromide > chloride > nitrate > fluoride (By similarity). Operates in the endoplasmic reticulum (ER) membrane where it mediates chloride efflux to compensate for the loss of positive charges from the ER lumen upon Ca(2+) release. Contributes to the maintenance of ER Ca(2+) pools and activation of unfolded protein response to prevent accumulation of misfolded proteins in the ER lumen. Particularly involved in ER homeostasis mechanisms underlying motor neurons and retinal photoreceptors survival (By similarity) (PubMed: <a href="#">25698737</a> , PubMed: <a href="#">30157172</a> , PubMed: <a href="#">37142673</a> ).
Cellular Location	Endoplasmic reticulum membrane; Multi-pass membrane protein. Note=Within the endoplasmic reticulum (ER), localizes to the mitochondria-associated ER membrane, a zone of contact between the ER and mitochondrial membranes. Enriched in the rough ER. {ECO:0000250 UniProtKB:Q99LI2, ECO:0000269 PubMed:31653868}

## Tissue Location

Expressed in the retina of the eye, with extensive expression in the lamina cribrosa, optic nerve, ganglion cell layer, inner nuclear layer, outer nuclear layer and retinal pigment epithelium.

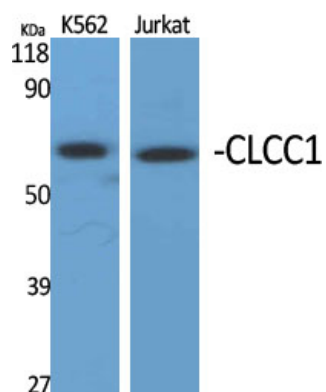
## Background

---

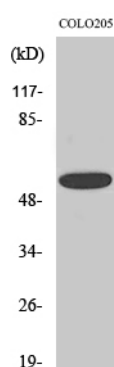
Seems to act as a chloride ion channel.

## Images

---



Western Blot analysis of various cells using CLCC1  
Polyclonal Antibody diluted at 1 : 1000



Western Blot analysis of HepG2 cells using CLCC1  
Polyclonal Antibody diluted at 1 : 1000

Please note: All products are 'FOR RESEARCH USE ONLY. NOT FOR USE IN DIAGNOSTIC OR THERAPEUTIC PROCEDURES'.