

RPS15 Antibody (N-term)

Affinity Purified Rabbit Polyclonal Antibody (Pab)
Catalog # AP6914a

Product Information

Application	WB, IHC-P, FC, E
Primary Accession	P62841
Other Accession	P62845 , P62844 , P62843 , P62846 , Q56K10
Reactivity	Human, Rat, Mouse
Predicted	Bovine, Chicken, Mouse, Pig, Rat
Host	Rabbit
Clonality	Polyclonal
Isotype	Rabbit IgG
Clone Names	RB21257
Antigen Region	1-30

Additional Information

Other Names	40S ribosomal protein S15, RIG protein, RPS15, RIG
Target/Specificity	This RPS15 antibody is generated from rabbits immunized with a KLH conjugated synthetic peptide between 1-30 amino acids from the N-terminal region of human RPS15.
Dilution	WB~~1:1000 IHC-P~~1:100~500 FC~~1:10~50 E~~Use at an assay dependent concentration.
Format	Purified polyclonal antibody supplied in PBS with 0.09% (W/V) sodium azide. This antibody is purified through a protein A column, followed by peptide affinity purification.
Storage	Maintain refrigerated at 2-8°C for up to 2 weeks. For long term storage store at -20°C in small aliquots to prevent freeze-thaw cycles.
Precautions	RPS15 Antibody (N-term) is for research use only and not for use in diagnostic or therapeutic procedures.

Protein Information

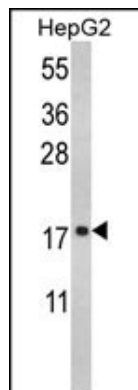
Background

Ribosomes, the organelles that catalyze protein synthesis, consist of a small 40S subunit and a large 60S subunit. Together these subunits are composed of 4 RNA species and approximately 80 structurally distinct proteins. RPS15 is a component of the 40S subunit. The protein belongs to the S19P family of ribosomal proteins. It is located in the cytoplasm.

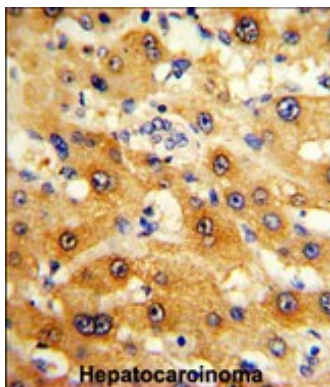
References

Yu, Y., et al., Protein Sci. 14 (6), 1438-1446 (2005)

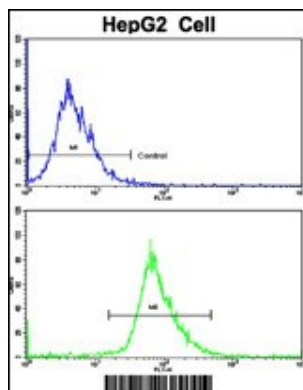
Images



Western blot analysis of RPS15 Antibody (N-term) (Cat. #AP6914a) in HepG2 cell line lysates (35ug/lane). RPS15 (arrow) was detected using the purified Pab.



Formalin-fixed and paraffin-embedded human hepatocarcinoma reacted with RPS15 Antibody (N-term), which was peroxidase-conjugated to the secondary antibody, followed by DAB staining. This data demonstrates the use of this antibody for immunohistochemistry; clinical relevance has not been evaluated.



Flow cytometric analysis of HepG2 cells using RPS15 Antibody (N-term) (bottom histogram) compared to a negative control cell (top histogram). FITC-conjugated goat-anti-rabbit secondary antibodies were used for the analysis.

Citations

- [Ribosomal proteins RPL37, RPS15 and RPS20 regulate the Mdm2-p53-MdmX network.](#)

Please note: All products are 'FOR RESEARCH USE ONLY. NOT FOR USE IN DIAGNOSTIC OR THERAPEUTIC PROCEDURES'.