

CLIP-115 Polyclonal Antibody

Catalog # AP69150

Product Information

Application	WB
Primary Accession	Q9UDT6
Reactivity	Human, Mouse, Rat
Host	Rabbit
Clonality	Polyclonal
Calculated MW	115837

Additional Information

Gene ID	7461
Other Names	CLIP2; CYLN2; KIAA0291; WBSCR3; WBSCR4; WSCR4; CAP-Gly domain-containing linker protein 2; Cytoplasmic linker protein 115; CLIP-115; Cytoplasmic linker protein 2; Williams-Beuren syndrome chromosomal region 3 protein; Williams-Beuren syndro
Dilution	WB~~Western Blot: 1/500 - 1/2000. ELISA: 1/5000. Not yet tested in other applications.
Format	Liquid in PBS containing 50% glycerol, 0.5% BSA and 0.09% (W/V) sodium azide.
Storage Conditions	-20°C

Protein Information

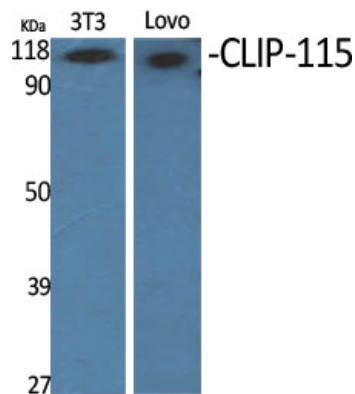
Name	CLIP2
Synonyms	CYLN2, KIAA0291, WBSCR3, WBSCR4, WSCR4
Function	Seems to link microtubules to dendritic lamellar body (DLB), a membranous organelle predominantly present in bulbous dendritic appendages of neurons linked by dendrodendritic gap junctions. May operate in the control of brain-specific organelle translocations (By similarity).
Cellular Location	Cytoplasm {ECO:0000250 UniProtKB:O55156}. Cytoplasm, cytoskeleton {ECO:0000250 UniProtKB:Q9Z0H8}. Note=Localizes preferentially to the ends of tyrosinated microtubules {ECO:0000250 UniProtKB:Q9Z0H8}

Background

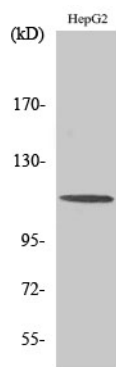
Seems to link microtubules to dendritic lamellar body (DLB), a membranous organelle predominantly

present in bulbous dendritic appendages of neurons linked by dendrodendritic gap junctions. May operate in the control of brain-specific organelle translocations (By similarity).

Images



Western Blot analysis of various cells using CLIP-115 Polyclonal Antibody



Western Blot analysis of A549 cells using CLIP-115 Polyclonal Antibody

Please note: All products are 'FOR RESEARCH USE ONLY. NOT FOR USE IN DIAGNOSTIC OR THERAPEUTIC PROCEDURES'.