

CLIP-170 Polyclonal Antibody

Catalog # AP69151

Product Information

Application	WB
Primary Accession	P30622
Reactivity	Human, Mouse, Rat
Host	Rabbit
Clonality	Polyclonal
Calculated MW	162246

Additional Information

Gene ID	6249
Other Names	CLIP1; CYLN1; RSN; CAP-Gly domain-containing linker protein 1; Cytoplasmic linker protein 1; Cytoplasmic linker protein 170 alpha-2; CLIP-170; Reed-Sternberg intermediate filament-associated protein; Restin
Dilution	WB~~Western Blot: 1/500 - 1/2000. ELISA: 1/20000. Not yet tested in other applications.
Format	Liquid in PBS containing 50% glycerol, 0.5% BSA and 0.09% (W/V) sodium azide.
Storage Conditions	-20°C

Protein Information

Name	CLIP1
Synonyms	CYLN1, RSN
Function	Binds to the plus end of microtubules and regulates the dynamics of the microtubule cytoskeleton. Promotes microtubule growth and microtubule bundling. Links cytoplasmic vesicles to microtubules and thereby plays an important role in intracellular vesicle trafficking. Plays a role macropinocytosis and endosome trafficking.
Cellular Location	Cytoplasm. Cytoplasm, cytoskeleton. Cytoplasmic vesicle membrane; Peripheral membrane protein; Cytoplasmic side. Cell projection, ruffle. Note=Localizes to microtubule plus ends (PubMed:17889670, PubMed:21646404). Localizes preferentially to the ends of tyrosinated microtubules (By similarity). Accumulates in plasma membrane regions with ruffling and protrusions. Associates with the membranes of intermediate macropinocytic vesicles (PubMed:12433698) {ECO:0000250 UniProtKB:Q922J3, ECO:0000269 PubMed:12433698,

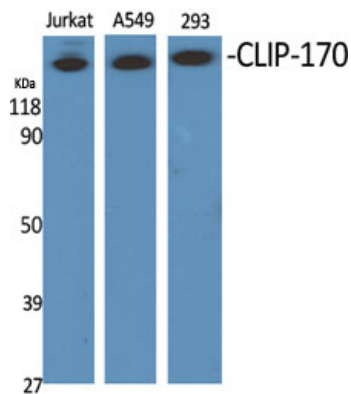
Tissue Location

Detected in dendritic cells (at protein level). Highly expressed in the Reed-Sternberg cells of Hodgkin disease

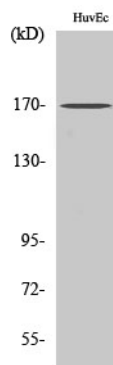
Background

Binds to the plus end of microtubules and regulates the dynamics of the microtubule cytoskeleton. Promotes microtubule growth and microtubule bundling. Links cytoplasmic vesicles to microtubules and thereby plays an important role in intracellular vesicle trafficking. Plays a role macropinocytosis and endosome trafficking.

Images



Western Blot analysis of various cells using CLIP-170 Polyclonal Antibody



Western Blot analysis of RAW264.7 cells using CLIP-170 Polyclonal Antibody

Please note: All products are 'FOR RESEARCH USE ONLY. NOT FOR USE IN DIAGNOSTIC OR THERAPEUTIC PROCEDURES'.