

# SAR1A Antibody (Center)

Affinity Purified Rabbit Polyclonal Antibody (Pab)  
Catalog # AP6915c

## Product Information

---

<b>Application</b>	IHC-P, FC, WB, E
<b>Primary Accession</b>	<a href="#">Q9NR31</a>
<b>Other Accession</b>	<a href="#">Q52NJ3</a> , <a href="#">P36536</a> , <a href="#">Q3T0D7</a>
<b>Reactivity</b>	Human, Mouse
<b>Predicted</b>	Bovine, Mouse, Pig
<b>Host</b>	Rabbit
<b>Clonality</b>	Polyclonal
<b>Isotype</b>	Rabbit IgG
<b>Clone Names</b>	RB21259
<b>Antigen Region</b>	122-149

## Additional Information

---

<b>Other Names</b>	GTP-binding protein SAR1a, COPII-associated small GTPase, SAR1A, SAR1, SARA, SARA1
<b>Target/Specificity</b>	This SAR1A antibody is generated from rabbits immunized with a KLH conjugated synthetic peptide between 122-149 amino acids from the Central region of human SAR1A.
<b>Dilution</b>	IHC-P~~1:100~500 FC~~1:10~50 WB~~1:1000 E~~Use at an assay dependent concentration.
<b>Format</b>	Purified polyclonal antibody supplied in PBS with 0.09% (W/V) sodium azide. This antibody is purified through a protein A column, followed by peptide affinity purification.
<b>Storage</b>	Maintain refrigerated at 2-8°C for up to 2 weeks. For long term storage store at -20°C in small aliquots to prevent freeze-thaw cycles.
<b>Precautions</b>	SAR1A Antibody (Center) is for research use only and not for use in diagnostic or therapeutic procedures.

## Protein Information

---

### Background

---

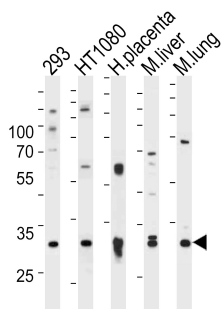
SAR1A is involved in transport from the endoplasmic reticulum to the Golgi apparatus (By similarity) and required to maintain SEC16A localization at discrete locations on the ER membrane perhaps by preventing its dissociation. SAR1A-GTP-dependent assembly of SEC16A on the ER membrane forms an organized

scaffold defining endoplasmic reticulum exit sites (ERES).

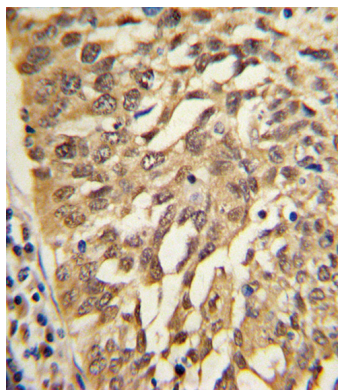
## References

Morgan,A.R., et.al., Am. J. Med. Genet. B Neuropsychiatr. Genet. 144B (6), 762-770(2007)

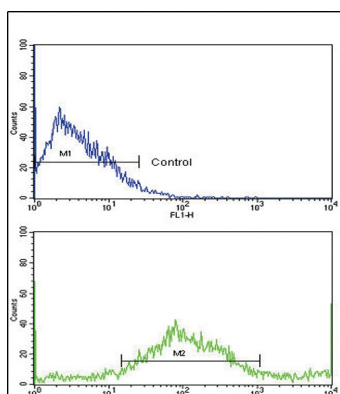
## Images



Western blot analysis of lysates from 293,HT1080 cell line,human placenta,mouse liver and lung tissue (from left to right),using SAR1A Antibody (Center)(Cat. #AP6915c).AP6915c was diluted at 1:1000 at each lane. A goat anti-rabbit IgG H&L(HRP) at 1:5000 dilution was used as the secondary antibody.Lysates at 35ug per lane.



Formalin-fixed and paraffin-embedded human lung carcinoma with SAR1A Antibody (Center), which was peroxidase-conjugated to the secondary antibody, followed by DAB staining. This data demonstrates the use of this antibody for immunohistochemistry; clinical relevance has not been evaluated.



Flow cytometric analysis of NCI-H292 cells using SAR1A Antibody (Center)(bottom histogram) compared to a negative control cell (top histogram). FITC-conjugated goat-anti-rabbit secondary antibodies were used for the analysis.

Please note: All products are 'FOR RESEARCH USE ONLY. NOT FOR USE IN DIAGNOSTIC OR THERAPEUTIC PROCEDURES'.