

CMTM2 Polyclonal Antibody

Catalog # AP69167

Product Information

Application	WB
Primary Accession	Q8TAZ6
Reactivity	Human
Host	Rabbit
Clonality	Polyclonal
Calculated MW	27496

Additional Information

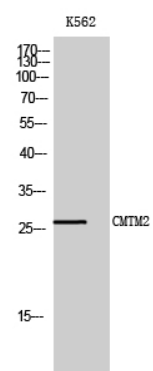
Gene ID	146225
Other Names	CMTM2; CKLFSF2; CKLF-like MARVEL transmembrane domain-containing protein 2; Chemokine-like factor superfamily member 2
Dilution	WB~~Western Blot: 1/500 - 1/2000. ELISA: 1/40000. Not yet tested in other applications.
Format	Liquid in PBS containing 50% glycerol, 0.5% BSA and 0.09% (W/V) sodium azide.
Storage Conditions	-20°C

Protein Information

Name	CMTM2
Synonyms	CKLFSF2
Cellular Location	Membrane; Multi-pass membrane protein.
Tissue Location	Highly expressed in testis.

Images

Western Blot analysis of K562 cells using CMTM2
Polyclonal Antibody



Please note: All products are 'FOR RESEARCH USE ONLY. NOT FOR USE IN DIAGNOSTIC OR THERAPEUTIC PROCEDURES'.