

# CNT2 Polyclonal Antibody

Catalog # AP69187

## Product Information

---

Application	WB, IHC-P
Primary Accession	<a href="#">O43868</a>
Reactivity	Human, Mouse, Rat
Host	Rabbit
Clonality	Polyclonal
Calculated MW	71926

## Additional Information

---

Gene ID	9153
Other Names	SLC28A2; CNT2; Sodium/nucleoside cotransporter 2; Concentrative nucleoside transporter 2; CNT 2; hCNT2; Na(+)/nucleoside cotransporter 2; Sodium-coupled nucleoside transporter 2; Sodium/purine nucleoside co-transporter; SPNT; Solute carrier
Dilution	WB~~Western Blot: 1/500 - 1/2000. Immunohistochemistry: 1/100 - 1/300. ELISA: 1/10000. Not yet tested in other applications. IHC-P~~N/A
Format	Liquid in PBS containing 50% glycerol, 0.5% BSA and 0.09% (W/V) sodium azide.
Storage Conditions	-20°C

## Protein Information

---

Name	SLC28A2
Synonyms	CNT2
Function	Sodium-dependent and purine-selective transporter (PubMed: <a href="#">10087507</a> , PubMed: <a href="#">9435697</a> ). Exhibits the transport characteristics of the nucleoside transport system cif or N1 subtype (N1/cif) (selective for purine nucleosides and uridine) (PubMed: <a href="#">10087507</a> , PubMed: <a href="#">21795683</a> , PubMed: <a href="#">9435697</a> ). Plays a critical role in specific uptake and salvage of purine nucleosides in kidney and other tissues (PubMed: <a href="#">9435697</a> ). May contribute to regulate the transport of organic compounds in testes across the blood-testis- barrier (Probable).
Cellular Location	Membrane; Multi-pass membrane protein. Apicolateral cell membrane; Multi-pass membrane protein. Note=Localized to the apicolateral membranes of Sertoli cells and vascular endothelial cells in testis

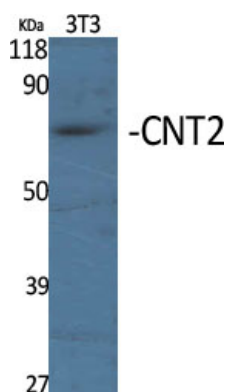
## Tissue Location

Expressed in heart and skeletal muscle followed by liver, kidney, intestine, pancreas, placenta and brain (PubMed:9435697). Weak expression in lung (PubMed:9435697). In testis, primarily localized to the apicolateral membranes of Sertoli cells and vascular endothelial cells, and weakly expressed in Leydig cells, peritubular myoid cells and germ cells (PubMed:35307651)

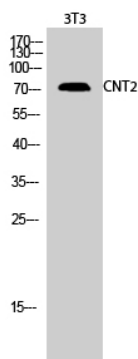
## Background

Sodium-dependent and purine-selective transporter. Exhibits the transport characteristics of the nucleoside transport system cif or N1 subtype (N1/cif) (selective for purine nucleosides and uridine). Plays a critical role in specific uptake and salvage of purine nucleosides in kidney and other tissues.

## Images



Western Blot analysis of various cells using CNT2 Polyclonal Antibody



Western Blot analysis of 3T3 cells using CNT2 Polyclonal Antibody

Please note: All products are 'FOR RESEARCH USE ONLY. NOT FOR USE IN DIAGNOSTIC OR THERAPEUTIC PROCEDURES'.