

# Cofilin Polyclonal Antibody

Catalog # AP69189

## Product Information

|                   |                        |
|-------------------|------------------------|
| Application       | WB, IHC-P, IF          |
| Primary Accession | <a href="#">P23528</a> |
| Reactivity        | Human, Mouse, Rat      |
| Host              | Rabbit                 |
| Clonality         | Polyclonal             |
| Calculated MW     | 18502                  |

## Additional Information

|                    |  |
|--------------------|--|
| Gene ID            | 1072   |
| Other Names        | CFL1; CFL; Cofilin-1; 18 kDa phosphoprotein; p18; Cofilin; non-muscle isoform  |
| Dilution           | WB~~Western Blot: 1/500 - 1/2000. Immunohistochemistry: 1/100 - 1/300. Immunofluorescence: 1/200 - 1/1000. ELISA: 1/10000. Not yet tested in other applications. IHC-P~~N/A IF~~1:50~200 |
| Format             | Liquid in PBS containing 50% glycerol, 0.5% BSA and 0.09% (W/V) sodium azide.  |
| Storage Conditions | -20°C  |

## Protein Information

|                   |   |
|-------------------|---|
| Name              | CFL1  |
| Synonyms          | CFL   |
| Function          | Binds to F-actin and exhibits pH-sensitive F-actin depolymerizing activity (PubMed: <a href="#">11812157</a> ). In conjunction with the subcortical maternal complex (SCMC), plays an essential role for zygotes to progress beyond the first embryonic cell divisions via regulation of actin dynamics (PubMed: <a href="#">15580268</a> ). Required for the centralization of the mitotic spindle and symmetric division of zygotes (By similarity). Plays a role in the regulation of cell morphology and cytoskeletal organization in epithelial cells (PubMed: <a href="#">21834987</a> ). Required for the up-regulation of atypical chemokine receptor ACKR2 from endosomal compartment to cell membrane, increasing its efficiency in chemokine uptake and degradation (PubMed: <a href="#">23633677</a> ). Required for neural tube morphogenesis and neural crest cell migration (By similarity). |
| Cellular Location | Nucleus matrix. Cytoplasm, cytoskeleton. Cell projection, ruffle membrane; Peripheral membrane protein; Cytoplasmic side. Cell projection, lamellipodium membrane; Peripheral membrane protein; Cytoplasmic side.   |

Cell projection, lamellipodium {ECO:0000250|UniProtKB:P18760}. Cell projection, growth cone {ECO:0000250|UniProtKB:P18760}. Cell projection, axon {ECO:0000250|UniProtKB:P18760}. Note=Colocalizes with the actin cytoskeleton in membrane ruffles and lamellipodia. Detected at the cleavage furrow and contractile ring during cytokinesis. Almost completely in nucleus in cells exposed to heat shock or 10% dimethyl sulfoxide

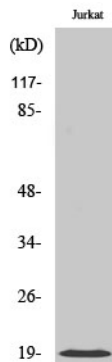
## Tissue Location

Widely distributed in various tissues.

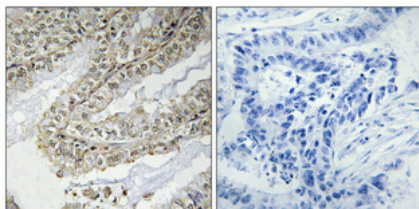
## Background

Binds to F-actin and exhibits pH-sensitive F-actin depolymerizing activity. Regulates actin cytoskeleton dynamics. Important for normal progress through mitosis and normal cytokinesis. Plays a role in the regulation of cell morphology and cytoskeletal organization. Required for the up-regulation of atypical chemokine receptor ACKR2 from endosomal compartment to cell membrane, increasing its efficiency in chemokine uptake and degradation (PubMed:[11812157](#), PubMed:[15580268](#), PubMed:[21834987](#), PubMed:[23633677](#)). Required for neural tube morphogenesis and neural crest cell migration (By similarity).

## Images



Western Blot analysis of various cells using Cofilin Polyclonal Antibody diluted at 1 : 500



Immunohistochemical analysis of paraffin-embedded Human lung cancer. Antibody was diluted at 1:100(4°,overnight). High-pressure and temperature Tris-EDTA,pH8.0 was used for antigen retrieval. Negative contrl (right) obtained from antibody was pre-absorbed by immunogen peptide.

Please note: All products are 'FOR RESEARCH USE ONLY. NOT FOR USE IN DIAGNOSTIC OR THERAPEUTIC PROCEDURES'.