

TGM4 Antibody (Center)

Affinity Purified Rabbit Polyclonal Antibody (Pab)
Catalog # AP6918c

Product Information

Application	WB, IHC-P, FC, E
Primary Accession	P49221
Reactivity	Human, Mouse
Host	Rabbit
Clonality	Polyclonal
Isotype	Rabbit IgG
Clone Names	RB21271
Calculated MW	77145
Antigen Region	135-164

Additional Information

Gene ID	7047
Other Names	Protein-glutamine gamma-glutamyltransferase 4, Fibrinolyase, Prostate transglutaminase, Prostate-specific transglutaminase, Transglutaminase P, TG(P), TGP, TGase P, Transglutaminase-4, TGase-4, TGM4
Target/Specificity	This TGM4 antibody is generated from rabbits immunized with a KLH conjugated synthetic peptide between 135-164 amino acids from the Central region of human TGM4.
Dilution	WB~~1:1000-1:2000 IHC-P~~1:100~500 FC~~1:10~50 E~~Use at an assay dependent concentration.
Format	Purified polyclonal antibody supplied in PBS with 0.09% (W/V) sodium azide. This antibody is purified through a protein A column, followed by peptide affinity purification.
Storage	Maintain refrigerated at 2-8°C for up to 2 weeks. For long term storage store at -20°C in small aliquots to prevent freeze-thaw cycles.
Precautions	TGM4 Antibody (Center) is for research use only and not for use in diagnostic or therapeutic procedures.

Protein Information

Name	TGM4
Function	Associated with the mammalian reproductive process. Catalyzes the cross-linking of proteins and the conjugation of polyamines to specific

proteins in the seminal tract.

Tissue Location

Prostate.

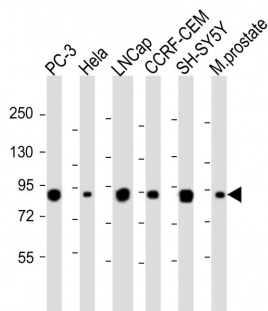
Background

TGM4 is associated with the mammalian reproductive process and catalyzes the cross-linking of proteins and the conjugation of polyamines to specific proteins in the seminal tract.

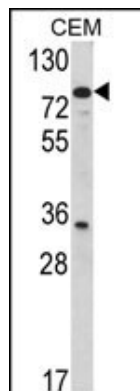
References

Jiang, W.G., et al., *Microvasc. Res.* 77 (2), 150-157 (2009)

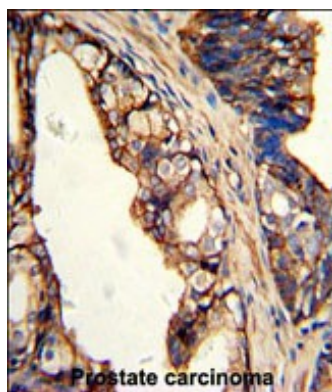
Images



All lanes : Anti-TGM4 Antibody (Center) at 1:1000-1:2000 dilution Lane 1: PC-3 whole cell lysate Lane 2: HeLa whole cell lysate Lane 3: LNCap whole cell lysate Lane 4: CCRF-CEM whole cell lysate Lane 5: SH-SY5Y whole cell lysate Lane 6: Mouse prostate whole tissue lysate Lysates/proteins at 20 µg per lane. Secondary Goat Anti-Rabbit IgG, (H+L), Peroxidase conjugated at 1/10000 dilution. Predicted band size : 77 kDa Blocking/Dilution buffer: 5% NFDm/TBST.

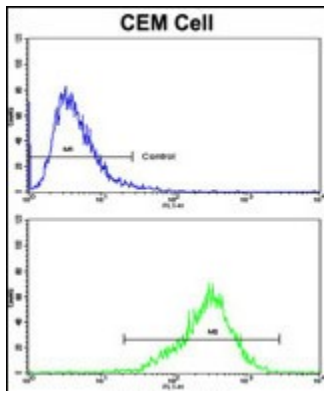


Western blot analysis of TGM4 Antibody (Center) (Cat. #AP6918c) in CEM cell line lysates (35µg/lane). TGM4 (arrow) was detected using the purified Pab.



Formalin-fixed and paraffin-embedded human prostate carcinoma with TGM4 Antibody (Center), which was peroxidase-conjugated to the secondary antibody, followed by DAB staining. This data demonstrates the use of this antibody for immunohistochemistry; clinical relevance has not been evaluated.

Flow cytometric analysis of CEM cells using TGM4 Antibody (Center)(bottom histogram) compared to a negative control cell (top histogram). FITC-conjugated



goat-anti-rabbit secondary antibodies were used for the analysis.

Please note: All products are 'FOR RESEARCH USE ONLY. NOT FOR USE IN DIAGNOSTIC OR THERAPEUTIC PROCEDURES'.