

# COL11A1 Polyclonal Antibody

Catalog # AP69191

## Product Information

---

<b>Application</b>	WB, IHC-P, IF, ICC, E
<b>Primary Accession</b>	<a href="#">P12107</a>
<b>Reactivity</b>	Human, Mouse
<b>Host</b>	Rabbit
<b>Clonality</b>	Polyclonal
<b>Calculated MW</b>	181065

## Additional Information

---

<b>Gene ID</b>	1301
<b>Other Names</b>	COL11A1; COLL6; Collagen alpha-1(XI) chain
<b>Dilution</b>	WB~~Western Blot: 1/500 - 1/2000. Immunohistochemistry: 1/100 - 1/300. Immunofluorescence: 1/200 - 1/1000. ELISA: 1/10000. Not yet tested in other applications. IHC-P~~N/A IF~~1:50~200 ICC~~N/A E~~N/A
<b>Format</b>	Liquid in PBS containing 50% glycerol, 0.5% BSA and 0.09% (W/V) sodium azide.
<b>Storage Conditions</b>	-20°C

## Protein Information

---

<b>Name</b>	COL11A1
<b>Synonyms</b>	COLL6
<b>Function</b>	May play an important role in fibrillogenesis by controlling lateral growth of collagen II fibrils.
<b>Cellular Location</b>	Secreted, extracellular space, extracellular matrix {ECO:0000255   PROSITE-ProRule:PRU00793}
<b>Tissue Location</b>	Cartilage, placenta and some tumor or virally transformed cell lines. Isoforms using exon IIA or IIB are found in the cartilage while isoforms using only exon IIB are found in the tendon

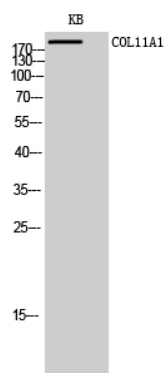
## Background

---

May play an important role in fibrillogenesis by controlling lateral growth of collagen II fibrils.

## Images

---



Western Blot analysis of KB cells using COL11A1  
Polyclonal Antibody diluted at 1 : 1000

Please note: All products are 'FOR RESEARCH USE ONLY. NOT FOR USE IN DIAGNOSTIC OR THERAPEUTIC PROCEDURES'.