

COL11A2 Polyclonal Antibody

Catalog # AP69192

Product Information

| | |
|--------------------------|------------------------|
| Application | WB, IHC-P |
| Primary Accession | P13942 |
| Reactivity | Human, Mouse |
| Host | Rabbit |
| Clonality | Polyclonal |
| Calculated MW | 171791 |

Additional Information

| | |
|---------------------------|-----------------------------------------------------------------------------------------------------------------------------------------|
| Gene ID | 1302 |
| Other Names | COL11A2; Collagen alpha-2(XI) chain |
| Dilution | WB~~Western Blot: 1/500 - 1/2000. Immunohistochemistry: 1/100 - 1/300. ELISA: 1/20000. Not yet tested in other applications. IHC-P~~N/A |
| Format | Liquid in PBS containing 50% glycerol, 0.5% BSA and 0.09% (W/V) sodium azide. |
| Storage Conditions | -20°C |

Protein Information

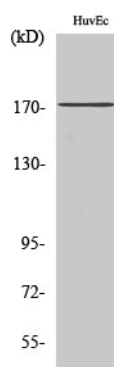
| | |
|--------------------------|-----------------------------------------------------------------------------------------------------|
| Name | COL11A2 |
| Function | May play an important role in fibrillogenesis by controlling lateral growth of collagen II fibrils. |
| Cellular Location | Secreted, extracellular space, extracellular matrix {ECO:0000255 PROSITE-ProRule:PRU00793} |

Background

May play an important role in fibrillogenesis by controlling lateral growth of collagen II fibrils.

Images

Western Blot analysis of various cells using COL11A2
Polyclonal Antibody diluted at 1 : 500



Please note: All products are 'FOR RESEARCH USE ONLY. NOT FOR USE IN DIAGNOSTIC OR THERAPEUTIC PROCEDURES'.