

COL4A1 Polyclonal Antibody

Catalog # AP69207

Product Information

Application	WB, IHC-P
Primary Accession	P02462
Reactivity	Human, Mouse
Host	Rabbit
Clonality	Polyclonal
Calculated MW	160611

Additional Information

Gene ID	1282
Other Names	COL4A1; Collagen alpha-1(IV) chain
Dilution	WB~~Western Blot: 1/500 - 1/2000. Immunohistochemistry: 1/100 - 1/300. ELISA: 1/20000. Not yet tested in other applications. IHC-P~~N/A
Format	Liquid in PBS containing 50% glycerol, 0.5% BSA and 0.09% (W/V) sodium azide.
Storage Conditions	-20°C

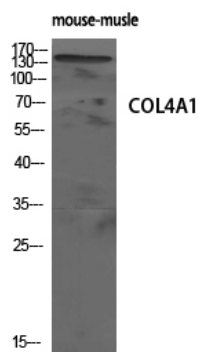
Protein Information

Name	COL4A1 (HGNC:2202)
Function	Type IV collagen is the major structural component of glomerular basement membranes (GBM), forming a 'chicken-wire' meshwork together with laminins, proteoglycans and entactin/nidogen.
Cellular Location	Secreted, extracellular space, extracellular matrix, basement membrane {ECO:0000250 UniProtKB:P02463}
Tissue Location	Highly expressed in placenta.

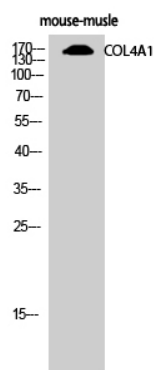
Background

Type IV collagen is the major structural component of glomerular basement membranes (GBM), forming a 'chicken-wire' meshwork together with laminins, proteoglycans and entactin/nidogen.

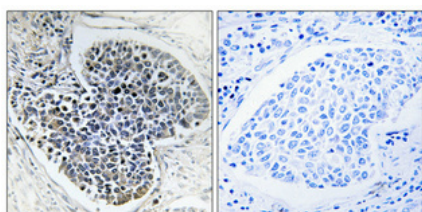
Images



Western Blot analysis of mouse-muscle cells using COL4A1 Polyclonal Antibody diluted at 1 : 500



Western Blot analysis of mouse-muscle cells using COL4A1 Polyclonal Antibody diluted at 1 : 500



Immunohistochemical analysis of paraffin-embedded Human lung cancer. Antibody was diluted at 1:100(4°,overnight). High-pressure and temperature Tris-EDTA,pH8.0 was used for antigen retrieval. Negative contrl (right) obtained from antibody was pre-absorbed by immunogen peptide.

Please note: All products are 'FOR RESEARCH USE ONLY. NOT FOR USE IN DIAGNOSTIC OR THERAPEUTIC PROCEDURES'.